

2019 ANNUAL CANCER REPORT



BSA

2019 ANNUAL CANCER REPORT



MISSION

To provide quality healthcare in Christian love, service and dignity.

VISION

A great place for patients.
A great place to work.
The financial strength to accomplish both.



NATIONAL ACCREDITATION PROGRAM FOR BREAST CENTERS
ACCREDITED BREAST CENTER



2019 Annual Cancer Report

Table of Contents

| | |
|--|-------|
| Message from the Cancer Program Administrator..... | 2 |
| Cancer Care Committee Members..... | 3-4 |
| Oncology Services Available | 5 |
| Screening and Prevention Programs..... | 6 |
| BSA Harrington Breast Center..... | 7 |
| Contrast Enhanced Mammography Technology | 8 |
| Outpatient Oncology Nursing..... | 9 |
| Inpatient Oncology Nursing | 10-11 |
| Pediatric Oncology..... | 12 |
| Success Stories | 13-14 |
| Physician Leadership | |
| • BSA Harrington Cancer Center Physicians..... | 15 |
| • BSA Amarillo Surgical Group | 16 |
| • Amarillo Pathology Group..... | 17 |
| • High Plains Radiological Association..... | 18 |
| • BSA Amarillo Diagnostic Clinic and ADC Endoscopy Specialists Center | 19 |
| Cancer Conference..... | 20 |
| Cancer Registry: Report, Statistics, Body System by Gender, Quality Measures (RQRS)..... | 21-24 |
| Nurse Navigators..... | 25 |
| Cancer Risk Assessment and Genetic Counseling | 26 |
| Survivorship..... | 27-28 |
| American Cancer Society and Other Community Partners | 29 |
| Fun in the Community..... | 30 |

Message from the Cancer Program Administrator



Curtis Reneau, B.S., R.T. (T)
*BSA Harrington Cancer
Center Director*

In 2019, BSA Harrington Cancer Center and BSA Harrington Breast Center continued to expand and enhance oncology service offerings and care while staying true to our mission of providing quality healthcare in Christian love, service and dignity. Ardent and BSA remain dedicated to investing in the future of cancer prevention, detection and treatment. This year we have added contrast enhanced mammography, a genetics clinic and begun the construction of a new state-of-the-art, comprehensive cancer center.

Contrast enhanced mammography (CEM) is a new diagnostic tool for identifying breast cancer. Newly offered at BSA Harrington Breast Center, this tool uses iodine contrast with a diagnostic mammogram to enhance potential cancerous lesions while subtracting normal breast tissue. CEM is a low-cost diagnostic exam that boasts high specificity rates with low false positive rates. This paired with our expert Breast Radiologist leads to earlier detection and better outcomes.

As a part of BSA Harrington Cancer Center's commitment to being at the forefront of cancer care we have added a full genetics clinic that is led by Marilyn Miller MSN-APRN, FNP-C, OCN and Elaine Bryant RN, BSN, OCN, CBE-MC. Genetics in cancer care is a continually expanding field that directly impacts decision making in the treatment and management of many cancers.

Marilyn completed the City of Hope's Intensive Course in Cancer Risk Assessment program in March and began seeing patients in May. Elaine has developed and grown the High Risk Program at the BSA Harrington Breast Center, which identifies candidates for genetic testing while educating them on the reason for and value of it. By helping to increase care coordination and access to critical testing, these two programs work hand-in-hand to deliver a level of expertise that sets both BSA Harrington Breast Center and Cancer Center apart from others.

The construction project for the new BSA Harrington Cancer Center Joyce Courson Campus began in August of this year with a completion timeline of early 2021. This new center will allow us to introduce technology not currently available in this area with two new Radiation Therapy Varian Truebeam Linear Accelerators. These accelerators will open new doors to shortened course treatments for prostate cancer and treatments that reach sub millimeter accuracies. In addition, there will be upgrades to a USP 800 compliant Infusion Pharmacy, updated laboratory complete with new Beckman Coulter Chemistry and Hematology analyzers, an infusion space equipped with 29 chairs that includes three private treatment rooms, space for family to accompany patients and seating arrangements that help personalize the treatment experience. This new center is being designed to promote healing through a patient-centered experience that begins with valet parking, first appointment one-on-one with a tour of the center, a small café, a bright naturally lit layout and the amazing care patients have come to know and expect from our staff.

New technologies and program offerings are important to our future and must be delivered with great quality. This is an area where BSA excels. We have maintained our Commission on Cancer accreditation, National Accreditation Program for Breast Centers Breast Center of Excellence, renewed our American Society of Clinical Oncology Quality Oncology Program Initiative certification, and American College of Radiology accreditation in diagnostic imaging services. This level of excellence is a testament to a staff that is dedicated to providing the best possible care to the Texas Panhandle and surrounding communities.



2019 BSA Cancer Care Committee

The dedication to provide the best oncology patient care is at the core of the Cancer Care Committee's purpose. The commitment of physicians and other healthcare professionals, along with their collaboration on cancer program activities, result in ongoing improvements to providing world-class cancer care and treatment services to the Texas Panhandle and surrounding region.

BSA Cancer Care Committee Physicians

Daniel Arsenault, M.D., Radiation Oncology, Specializing in Prostate, Breast, Lung, Stereotactic Radiosurgery, *Cancer Care Committee Chair*

Brian Pruitt, M.D., FACS Medical Oncology, Specializing in Breast Cancer, *Cancer Registry Quality Coordinator*

Sam Kirkendall, M.D., General Surgery, *Physician Liaison*

Jenks Currie, M.D., Diagnostic Radiology, Clinical Breast Radiology

Gary Aragon, M.D., Diagnostic Radiology, Clinical Breast Radiology

Paul Hakim, M.D., Diagnostic Radiology, Clinical Breast Radiology

Robert Todd, M.D., Pathology

The Multidisciplinary Team, Cancer Program Administrators and Coordinators

Lance Gatlin, BSA Vice President Physician Services, *Cancer Program Administrator*

Curtis Reneau, B.S., RTT, BSA Harrington Cancer Center Director, *Cancer Program Administrator*

Meagan Crawford, MBA, RHIA, CTR, BSA Director Health Information Management, *Cancer Conference Coordinator*

Annabel K. Hromas, B.S., BSA Quality Improvement Project Specialist/MBSCR, *Cancer Program Quality Improvement Coordinator*

Stan McKeever, MSW, BSA Harrington Cancer Center Manager Social Services, *Psychosocial Services Coordinator*

Gina Cravey, BSN, RN, CHRC, CCRC, BSA Harrington Cancer Center Manager Clinical Research, *Clinical Research Coordinator*

Barbara Simms, BSA Harrington Cancer Center Outreach Coordinator, *Community Outreach Coordinator*

Marilyn Miller MSN-APRN, FNP-C, BSA Harrington Cancer Center Medical Oncology, *Cancer Risk Assessment and Genetic Counseling*

Diane Maiwald RN, BSN, CPHQ, BSA Director of Quality Improvement & Infection Prevention

Genia James, RN, BSN, CPHQ, BSA Manager, Quality Improvement

Ellen Nelson, RN, Director, BSA Orthopedics/Neurology & Oncology

Teri Skelton, RN, BSA Director of Pediatrics/PICU

Natalie Hall, RN, BSN, OCN, BSA Harrington Cancer Center Nurse Manager

Cindy Brassfield, RTT, ARDMS, BSA Harrington Breast Center Manager

Alana Elmquist, NP, BSA Palliative Care Program

Stephanie Alvarado, NP, BSA Palliative Care Program

Carolyn Veteto, BSN, RN, OCN, SCRNP, BSA Clinical Educator

Catrina Melton, RN, BSA Clinical Educator PEDI/PICU

Krissy Thomason, PharmD, BSA Harrington Cancer Center Pharmacy Manager

Shelly Black, COTA, CLT, BSA Outpatient Therapy Services

The Multidisciplinary Team, Cancer Program Administrators & Coordinators (cont.)

Gloria Mares, CTR, BSA Cancer Registry Supervisor

Lisa Perez, MBA, CCRP, Clinical Research Associate

Aneta Younger, BS, RT, CMD, BSA Harrington Cancer Center Manager Radiation Services

Whitney Warminski, RD, BSA Harrington Cancer Center Nutrition

Vietta Newton, RN, OCN, BSA Harrington Cancer Center Patient Navigation

Kim Hazelbaker, BSA Harrington Cancer Center Lab Manager

Natalie Henning, LPC-S, BSA Harrington Cancer Center Supportive Care Counselor

Sharri Miller, BSN, RN, OCN, TTS, BSA Harrington Cancer Center Patient Education, Tobacco Cessation, Patient Navigation

Roseanne Ham, RN, BSA Case Management

Ryan Parnell, Harrington Cancer and Health Foundation, Director of Operations and Special Programs

Jennifer Puryear, American Cancer Society



Services Available For Our Oncology Patients

Our physicians, nurses and other healthcare professionals are committed to and passionate about providing excellent quality care. This collaboration, along with state-of-the-art technologies, ensures that oncology patients receive comprehensive treatment services in a supportive and caring environment.



- Cancer Registry
- Case Management
- Chemotherapy
- Clinical Research
- Diagnostic Imaging
- Emergency Services
- Genetic Testing & Counseling
- Hematology
- Medical Oncology
- Radiation Oncology
- Surgical Services
- Pathology
- Inpatient Oncology (Adult & Pediatrics)
- Interdisciplinary Breast Clinic
- Interdisciplinary Lung Clinic
- Oncology Nursing Care
- Laboratory
- Lymphedema Clinic
- Nutrition Services
- Patient Navigation
- Palliative Care/Hospice
- Pharmacy
- Prevention Programs
- Psychosocial Services
- Quality Improvement
- Rehabilitation Services (Inpatient & Outpatient)
- Respiratory Services
- Screening Services
 - Breast & Mobile Mammography Coach
 - Lung Screening
- Sleep Disorders Services
- Spiritual Care
- Supportive Care Programs & Services
- Survivorship Care Program

Screening and Prevention Programs

| | | |
|-------------------|--|--|
| Prevention | <p>98 counseled</p> <p>67 mailed information</p> <p>169 referrals</p> | <p>Lung Tobacco Cessation Program</p> <p>The Tobacco Dependence Center at BSA Harrington Cancer Center is dedicated to providing health education on the effects of tobacco use and helping tobacco users kick the habit. The program also offers education on secondhand smoke and tobacco addiction.</p> |
| | <p>322 new patients</p> <p>260 follow up patients</p> <p>23 positive findings</p> | <p>Breast High-Risk Program</p> <p>This program helps identify individuals who are at the greatest risk for breast cancer and implement closer surveillance and risk-reduction strategies designed to prevent breast cancer and/or ensure early detection.</p> <p>If a genetic mutation is identified, the patient is referred to the appropriate healthcare provider per ordering physician.</p> |
| Screening | <p>302 screened</p> <p>21 abnormal findings</p> <p>4 cancers detected</p> | <p>Lung LDCT Screening Program</p> <p>BSA Harrington Cancer Center provides low-dose computed tomography (LDCT) lung cancer screenings for eligible smokers in the local adult population. This program also coordinates with our smoking cessation prevention project led by a tobacco-certified registered nurse.</p> <p>If findings are positive, the Lung Nurse Navigator contacts the referring physician and offers navigation for the patient.</p> |
| | <p>15,140 screened</p> <p>3,473 recall diagnostic workup</p> <p>220 positive findings</p> | <p>Breast Breast Cancer Screening Program</p> <p>BSA Harrington Cancer Center offers screening mammography both in-house at the Breast Center and throughout the community with our mobile mammography coach. Our mobile mammography coach travels throughout the 26 counties in the Texas and Oklahoma Panhandle to provide screening and education to women who might not otherwise receive these services.</p> <p>If findings are positive, the patient is recalled for a diagnostic workup.</p> |
| Outreach | <p>18 events</p> <p>8,400 attendees</p> <p>180 mammography appointment cards returned</p> | <p>Outreach Community Outreach Events</p> <p>BSA and BSA Harrington Cancer Center are proud to participate in community events. This gives us an opportunity to reach and educate individuals in the community regarding cancer and screening programs available to them.</p> |



BSA Harrington Breast Center is an outpatient facility dedicated to serving our community and surrounding communities by identifying cancer in its infancy, when it is most treatable. Our goal is to provide a calm and relaxing atmosphere to promote a better exam experience. Currently, BSA Harrington Breast Center offers screening, diagnostic and bone health services. With the use of our mobile mammography coach, our center is able to educate surrounding communities on the importance of early detection and provide them with screenings. To ensure these potentially life-saving screenings are available to everyone, BSA Harrington Breast Center partners with local resources to provide no cost screenings for the uninsured. We have a long-standing relationship with High Plains Radiology Association, expert breast radiologists, to provide on-site patient care, education and diagnostic evaluation services to patients with breast health issues. We are proud to say that BSA Harrington Breast Center continues to be recognized for providing excellent quality care to our patients through both the National Accreditation Program for Breast Centers and the American College of Radiology's Breast Imaging Center of Excellence designation. All these things allow us to live out our mission of providing quality care in Christian love, service and dignity.



BSA HARRINGTON BREAST CENTER PROVIDES:

- Breast Cancer Nurse Navigation
- Breast Ultrasound Services
- Bone Density Screening
- Contrast Enhanced Mammography
- Convenient Saturday Screenings
- Digital Breast Tomosynthesis
- Digital Mammography
- High Risk Clinic
- Mobile Mammography Screenings
- Stereotactic Breast Biopsy
- Ultrasound Guided Biopsy
- Wire Localization Procedures

IN THE PAST YEAR (NOV 2018 - AUG 2019)

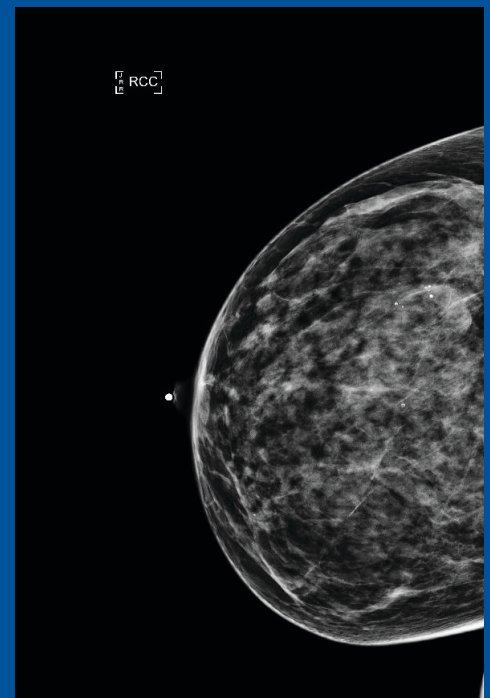
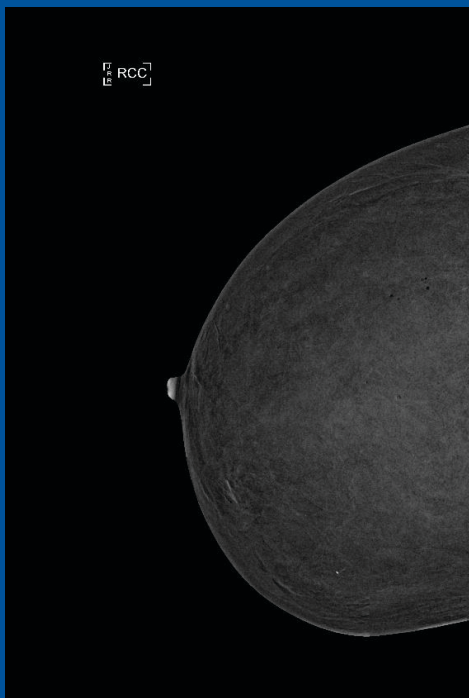
- 5,813 2D Screening Mammograms
- 7,276 3D Screening Mammograms
- 110 Contrast Enhanced Mammography (started in May)
- 2,051 Mobile Mammography (outreach) Screenings
- 548 Breast Biopsies
- 2,391 Bone Density Screenings
- 3,513 Ultrasounds

Contrast Enhanced Mammography Technology



T. Jenks Currie, M.D.
Medical Director
BSA Harrington Breast Center

We are excited to announce the 2019 arrival of Contrast Enhanced Mammography (CEM), a new technology at BSA Harrington Breast Center. This technique utilizes conventional mammogram that is augmented with the use of intravenous contrast material. The radiation exposure is similar to conventional diagnostic mammography evaluations. Based on its ability to image neovascularity in a fashion similar to MRI, CEM is a promising technique for depicting cancers that are not visible on standard unenhanced mammography. It is approved for clinical use and is performed in the diagnostic clinic at BSA Harrington Breast Center. Results of clinical studies show it to be significantly more sensitive and specific than mammography alone and to have sensitivity and specificity comparable to contrast-enhanced breast MRI. Current and proposed uses include additional evaluation of symptomatic patients or patients with abnormal screening examinations, assessing local extent of newly diagnosed breast cancers, problem solving and monitoring of neoadjuvant chemotherapy.



Outpatient Oncology Nursing - BSA Harrington Cancer Center

The compassionate, caring nursing staff at BSA and BSA Harrington Cancer Center are committed to providing the highest level of patient care for our hematology and oncology patients. The completion of Oncology Nursing Society Chemotherapy certification by our infusion staff ensures they are knowledgeable about cutting edge cancer treatment therapies. Our nurses work hand in hand with physicians to provide the best hematology and oncology care in the Texas Panhandle.



ONS Chemotherapy Biotherapy Certified Nurses

(L to R) Natalie Hall, RN, OCN, Regina Schultz, RN, Debbie Martin, RN, Ayde Marrufo, RN, Cindy Crawford, RN, Jennifer Beyers RN, OCN, Rebecca McNabb, RN, Karen Sawyer, RN, Audrey Schaffer, RN, Roy Mabery, RN (not pictured Isela Venzor, RN, Vietta Newton, RN, OCN, Yvonna Morales, RN)

Oncology Certified Nurses

(L to R) Sharri Miller, RN, OCN, Jennifer Beyers, RN, OCN, Natalie Hall, RN, OCN (not pictured Rose Ingerson, RN, BSN, OCN, CCRC, Vietta Newton, RN, OCN and Karla Benson, RN OCN)



Radiation Certified Nurses

Blanca Loucks, RN and Lauren Sirimanodham, RN



Inpatient Oncology Nursing

New nurses are enrolled in the Oncology Nurse Orientation courses from the Oncology Nursing Society (ONS). The bundled curriculum includes Cancer Biology, Cancer Basics and the Fundamentals of Chemotherapy Immunotherapy Administration. This extensive course content provides each nurse with 21.7 hours of continuing education and builds a foundation for the delivery of excellent patient care. Three actively enrolled nurses are expected to complete the course requirements by the end of 2019.

All experienced nurses are required to maintain an active chemo provider card through the Oncology Nursing Society. Fourteen nurses currently have this credential that allows them to administer chemotherapy, and validation of continued competency is required annually. In addition, BSA requires all of these nurses to maintain Advanced Cardiovascular Life Support (ACLS) certification.

BSA has participated in a Texas Workforce Commission grant to facilitate the acquisition of the OCN credential for nurses who meet the ONS and facility requirements. There is no cost to the participants for a review course, study materials or the examination. Currently, three shift supervisors have completed the review course. One of them has successfully passed the national certification exam and the others have pending testing dates.

There are currently four OCNs working on the unit: Joni Faulkner, RN, Ashley Fulcher, RN, Marianne Jones, RN, and Carolyn Veteto, RN.



Inpatient Oncology Nursing



Carolyn Veteto, BSN, RN, OCN, SCRN



2019 Oncology Department & Unit Specific Education (Adult Patient)

Annual Competency

Biomed
 Glucose Monitor
 Heel Boots
 Narcotic Diversion
 Patient Safety
 Pyxis
 Restraints
 Safe Patient Handling/Turn Assist

Unit Competency

CAUTI Prevention
 Code Cart
 Consents
 CVC Maintenance
 Fall Prevention
 Hazardous Drug Precautions
 Neutropenia
 Pressure Ulcer Prevention
 Swallow Screen

Netlearning

Abuse & Neglect
 ACS & Stroke
 Blood Administration
 Care of the Bariatric Patient
 Cultural Competency
 Delegation & Supervision
 EMTALA
 Fall Prevention
 Hazardous Drug Precautions
 Pain Management
 Sepsis
 Trauma
 Wound Care

Department & Unit Specific Education on Lippincott

Anemia Management
 Neutropenia Management
 Sepsis
 Thrombocytopenia Management
 Tumor Lysis Syndrome

Assessment Chemotherapy Toxicities

Biotherapy/Immunotherapy
 Chemotherapy Administration
 Extravasation Management
 Hazardous Drug Spill Management
 Infusion reaction, Cytokine Release Syndrome
 Infusion Reaction

Presentations

PureWick®
 Tracheostomy Suctioning
 Leukemia
 Discharging on Anticoagulant for Afib/flutter
 Methotrexate
 Tumor Lysis Syndrome
 Mantle Cell Lymphoma
 Prevalon® Heel Boots; Turn Assist and Position System
 Venous Thromboembolism
 Trideo Training
 Cytogenetic Testing
 IME, Hill-Rom, Stryker Bed Fair
 Mylotarg™
 Bacterial Infection Markers
 ViaValve® Safety IV Catheter
 Antioxidants
 Care of the Neurosurgical Patient
 Platelet Transfusion

Pediatric Oncology

The nursing staff in the BSA Pediatrics department is committed to providing the highest quality care to pediatric oncology patients.

Each nurse must complete Association of Pediatric Hematology/Oncology Nursing Education (APHON) within six months of their hire date and must meet required educational offerings every year. These educational requirements are:

- Yearly chemotherapy competencies
- Yearly safety competencies
- Minimal requirements for chemotherapy administration
- APHON testing every three years
- Numerous chemotherapy educational offerings throughout the year

Additional processes are in place to ensure the best possible care:

- All chemotherapy medications are double-checked by two RNs every time a medication is administered
- The shift supervisors oversee the chemotherapy administration each time

Currently, there are 21 APHON certified nurses working in the BSA Pediatric unit.

The Pediatric Unit also works in conjunction with community services such as Camp Alphonse, Panhandle Angel Foundation, the Madison Knebusch Foundation, Children's Miracle Network and Harrington's Twenty-Four Hours in the Canyon to provide social, spiritual and financial services for all pediatric patients in the Panhandle.



Catrina Melton, RN, BSN, CPN
BSA Pedi/PICU Educator, Pediatric
Oncology Navigator, AHA Training
Center Coordinator

Catrina Melton, RN is the Pediatric Nurse Navigator. As a Navigator, Catrina meets weekly with the Pediatric Hematology/Oncology physicians, along with a BSA Pharmacist in order to facilitate safe and thorough communication regarding all orders for pediatric patients that require hematology or oncology services.



Success Stories

Early Mammograms and Genetic Testing for the Win



Mammograms become routine beginning at age 40 for most women, but Michelle Parsons of Amarillo had a good reason to start sooner.

"I'm adopted so I didn't know a lot about my family history," shared Parsons. "At the age of 38, I requested a baseline mammogram."

Michelle said a family friend's breast cancer diagnosis made her eager to get a fuller picture of her health. Especially since her lack of family history meant she wasn't sure if she was at an increased risk. Having one first-degree female relative (sister, mother, or daughter) diagnosed with breast cancer doubles your risk. With two first-degree relatives diagnosed, your risk is five times higher.

On May 7, Parsons went to BSA Harrington Breast Center, as she did every year, to get her mammogram.

The next day, Parsons received a call, notifying her there was a slight change in the image from the previous year.

"I went back on May 23 and did another set of pictures, an ultrasound plus a needle biopsy," Parsons says. "They told me it was very small, but the slight change shown in the mammogram was Stage 1 Invasive Ductal Carcinoma. Very scary to say the least."

Parsons's tumor was caught at a very early stage. This meant she needed surgery followed by radiation. Before any of that began, Parsons wanted to know more about her health and how it could possibly affect her two daughters. She had genetic testing performed a week after getting her diagnosis.

"Everything was negative. I don't carry any bad genes, so hopefully I haven't passed anything on to my kids," says Parsons. "That was another big concern for me."

Next up was surgery. To give Parsons the greatest chance of success, her surgeon recommended a therapeutic breast reduction. Having that surgery performed at the same time would mean the tumor removal could

have larger margins, leading to less radiation time.

In mid-July Parsons underwent both surgeries.

Both were successful and after recovering, Parsons started radiation at BSA Harrington Cancer Center. Parsons admits that a new daily routine is hard for people to balance, but says the BSA Harrington Cancer Center staff was always there for her.

"Vieta is my nurse navigator and she's been great," Parsons said. "If I have questions any time I text her and she texts me right back."

"Everybody has been really helpful, informative and very understanding," says Parsons. "They see this every single day and they help you out. The girl at the front recognizes me, hands me my badge and I go back."

Twenty treatments later, Parsons has completed radiation.

In addition to a supportive family, Parsons says the key to getting through a cancer diagnosis and the following treatments is a mental game.

"If you stay positive, that's 90% of the battle" shares Parsons. "I've never been scared. I was very initially, but then I was like 'you know what - this is no big deal. I'm going to beat this and it's going to be fine.'"

Her last piece of advice is to get a mammogram.

"Go get a mammogram! It saved me. I know it saves so many people," says Parsons. "It's not that big a deal. Please go get your mammograms."

A New Selfie: Chemo Patient Documents Her Cancer Journey with a Smile



Katherine "Kathy" Berry is maintaining a positive outlook in the midst of her own battle with breast cancer – and has the selfies to prove it.

The 72-year-old never imagined she would ever be receiving care at BSA Harrington Cancer Center.

"I have never considered getting cancer and I'm a retired hospice nurse," Berry shared.

Over the years, Berry had accompanied patients to BSA Harrington Cancer Center and worked alongside its staff.

"I'm not used to receiving care.," Berry said. "I'm used to being a caregiver."

Berry's primary care physician sent her to BSA Harrington Breast Center in August 2018 when she located a lump on Berry's right breast during a standard breast exam.

"It was a foreign object on top of my breast that I never felt before," Berry explained.

Within days, Berry had an appointment scheduled at BSA Harrington Cancer Center for testing, including multiple mammograms and biopsies.

Berry was diagnosed with Stage 2 Inflammatory Breast Cancer on September 24, 2018.

"When my nurse navigator told me that I had breast cancer, I was at a loss for words," Berry said. "I was so shocked and was not sure that I would ever breathe again."

In the days following, Berry had a breast MRI and then met with a familiar face, Dr. Brian Pruitt.

"I had told my nurse navigator I wouldn't decide on treatments until I spoke with Dr. Pruitt," Berry shared. "He is a friend, former colleague and I trust him with my life. He is caring, professional and I knew from the beginning this was going to be okay."

Berry's journey to becoming cancer-free would start with chemotherapy, followed by surgery.

Berry began chemotherapy at BSA Harrington Cancer Center on October 11, 2018.

"I had so much fun at chemo it was hurtful," laughed Berry. "The staff at BSA Harrington Cancer Center has an extraordinary sense of humor. They are professional and I felt safe in their hands."

Berry completed 20 weeks of chemotherapy on February 28, 2019.

"It was certainly a celebration but I'm wondering what I'm going to do on Thursdays," Berry shared."

It was important for Berry to reassure her friends and family so she took a selfie during every chemotherapy session.

"I took a selfie at chemo every week to send it off to numbers of people, including my niece, nephew, sister and brother-in-law," Berry explained. "I needed them to see how well I was doing, and the pictures showed that."

Berry couldn't help but smile every time she walked through BSA Harrington Cancer Center's doors for treatment.

"I laughed, ate popcorn and visited with old and new friends at Harrington," Berry shared. "I have made new friends on their own journey with breast and other types of cancer."

Although her diagnosis has altered her life in many ways, Berry's spirit remains unbroken.

"It's been quite a journey at this point, and it has been nothing but positive," Berry shared. "We have worked hard and I have the people behind me who know exactly what to do."

Physician Leadership



Brian Pruitt, M.D., FACP
*Medical Oncology
Specializing in Breast Cancer*



Daniel Arsenault, M.D.
*Radiation Oncology
Specializing in Prostate,
Breast, Lung & Stereotactic
Radiosurgery (SRS)*



Anita Ravipati, M.D.
*General Medical
Oncology & Hematology
Specializing in Breast,
Gastrointestinal Solid Tumors,
Benign Hematology &
Lymphomas*



Jaime Zusman, M.D.
*Radiation Oncology
Specializing in Breast, Brain,
Lung, Head & Neck Cancers,
Pediatric & Stereotactic
Radiosurgery (SRS)*



Paul Zorsky, M.D., MS
*Medical Oncology &
Hematology*



Milan Patel, M.D.
*Medical Oncology &
Hematology*



Javed Shinwari, M.D.
*Medical Oncology &
Hematology*





BSA Amarillo Surgical Group (ASG) has been caring for oncology patients from around the Panhandle and surrounding areas for more than 40 years. As part of the oncology care team, ASG provides the following oncologic surgical services:

Digestive System

- Gastrectomy
- Small & Large Colectomy
- Esophagogastrectomy
- Partial Hepatectomy
- Liver Lobectomy
- Liver Biopsy – Wedge and Core
- Proctectomy

Endocrine System

- Thyroidectomy
- Pancreatic Cancer Surgery

Breast

- Breast Biopsy
- Breast Mastectomy Partial, Modified Radical and Total
- Axillary Lymph Node Biopsy and Dissection
- Breast Oncoplastic Surgery

Integumentary

- Melanoma Excision
- Skin Cancer Excision



Samuel Kirkendall, M.D.
General Surgery
Physician Liaison

The surgeons of BSA Amarillo Surgical Group are committed to providing quality surgical care.



Shane Holloway, M.D., FACS
Surgical Oncology



Chance Irwin, M.D., FACS
General Surgery & Peripheral Vascular Surgery



Christopher Kolze, M.D.
General Surgery



David Langley, M.D., FACS
General Surgery & Peripheral Vascular Surgery



Michael Lary, M.D., FACS
General Surgery
Breast Surgical Oncology & Oncoplastic Breast Surgery



John McKinley, M.D., FACS
General Surgery & Peripheral Vascular Surgery

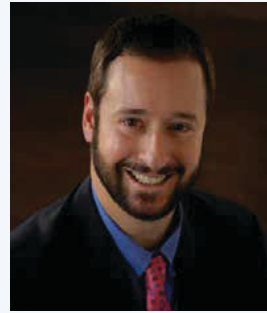


Erica Wheat, M.D.
General Surgery & Breast Surgery





Robert Todd, M.D.



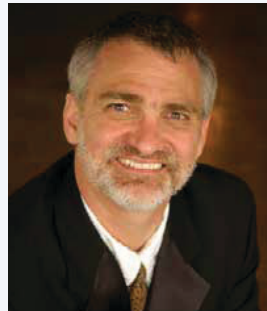
James Hurly, M.D.



Andrew Hoot, M.D.



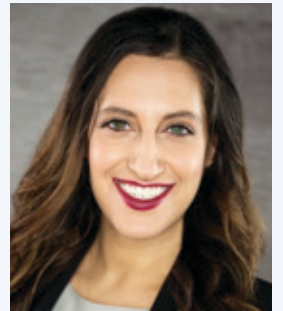
Daniel Schneider, M.D.



Michael Sennett, M.D.



Jason Schocker, M.D.



Eva Bashover, M.D.





**HIGH PLAINS
RADIOLOGICAL
ASSOCIATION**



John Andrew, M.D.



Gary Aragon, M.D.



Branch Archer, M.D.



Richard Archer, M.D.



April Bailey, M.D.



Charles Brooks, M.D.



Crandon Clark, M.D.



Stanley Cook, M.D.



T. Jenks Currie, M.D.



Michael Daniel, M.D.



Aaron Elliot, M.D.



Paul Hakim, M.D.



Michael Hall, M.D.



Raj Hashmi, M.D.



Richard Khu, M.D.



Nilay Mehta, M.D.



Rahul Mehta, M.D.



Paul Pan, M.D.



Robert Pinkston, M.D.



Matthew Scalapino, M.D.



Rakesh Shah, M.D.



Elijah Trout, M.D.



Martin Uszynski, M.D.



Kimberly Waugh, M.D.



Lawrence Zarian, M.D.



BSA Amarillo Diagnostic Clinic (ADC) along with ADC Endoscopy Specialists Center (AEC) are an integral part of the oncology care team at BSA Health System. They provide a wide range of services which aid in the screening and diagnostic phases of cancer care, including:

AMARILLO DIAGNOSTIC CLINIC

- **Gastroenterology**
Gastroenterologists play a large role in both the diagnosis and staging of GI tract cancers and the prevention of these cancers through screening programs.
- **Pulmonology**
Pulmonologists contribute to the prompt diagnosis, staging, and treatment of patients with lung cancer.
- **Nuclear Medicine**
Nuclear medicine specialists help noninvasively diagnose, stage and treat diseases through imaging. These treatments and imaging help primary oncologists choose the best treatment for the patient.

ADC ENDOSCOPY SPECIALISTS CENTER

- **Colonoscopy**
- **Esophagogastroduodenoscopy (EGD)**
- **Sigmoidoscopy**

All of these services aid in the screening, diagnosis and staging of GI tract cancers.

BSA Amarillo Diagnostic Clinic Physicians:

Gastroenterology

Daniel Beggs, MD
R. Todd Ellington, MD
Thomas Johnson, MD
James Lusby, MD
William Shear, MD
Hagos Tekeste, MD - Endoscopy Specialist
Abdul Thannoun, MD - Endoscopy Specialist

Pulmonology

Timothy Mooring, MD
Javier Dieguez, MD
Mark Sigler, MD

Nuclear Medicine

Bill Byrd, MD

2019 Cancer Conference

Cancer Conferences provide a weekly opportunity for oncology professionals to review and discuss cases in a multidisciplinary setting that includes Surgeons, Medical Oncologists, Radiation Oncologists, Pathologists, Radiologists, Nurse Practitioners, Oncology Nurses, Tumor Registrars, Radiation Technicians and Mammography Technicians. We currently hold two cancer conferences each week, a general conference and a breast cancer specific conference, where we review the clinical history, radiology films, pathology slides, family history, clinical research opportunities, staging and treatment guidelines for each case.

Between January and October we have reviewed 163 cases at the general cancer conference and 137 cases at the breast conference for a total of 300 cases.

TOP 10 SITES PRESENTED

- Breast
- Lymphoma
- Gastrointestinal
- Colorectal
- Blood & Bone Marrow
- Lung
- Esophagus
- Liver
- Skin
- Head/Neck



Cancer Registry - BSA Harrington Cancer Center

The cancer registry department is responsible for the data collection of all individuals with a reportable cancer diagnosis at BSA Health System. The data collection process includes reviewing the electronic health records to gather the patient's demographics, clinical data, staging, treatment information and outcomes for the purpose of combining all this information into an abstract. The cancer registry is mandated by both the Texas Cancer Registry and the American College of Surgeons Commission on Cancer (CoC).

The cancer registry team is responsible for abstracting newly diagnosed cancer cases, entering non-reportable cases and adding follow up encounters on patients diagnosed from 2005 on for BSA Health System. In addition to these daily activities, the cancer registry team also oversees the Commission on Cancer and National Accreditation Program for Breast Centers accreditations, the quarterly committee meetings that go with these accreditations and coordinates two weekly cancer conferences for BSA and BSA Harrington Cancer Center.

The registry department is composed of 10 employees including six abstractors, one follow-up/tumor board coordinator, one quality analyst, one registry supervisor and a registry director. Eight of these 10 employees are Certified Tumor Registrars and the remaining two will have their certifications completed within the next year.



(L to R): Nakisha Woods; Terri Prescott, CTR; Alicia Smith, CTR; Karen Frymoyer, RN, CTR; Meagan Crawford, MBA, RHIA, CTR (Director); Michelle Rainey, RHIT; Gloria Mares, CTR (Supervisor); Bonnie Tomlinson, CTR
Not pictured: Suzanne Basquez, RHIT, CTR; Joyce Ritter, RHIA, CTR

REGISTRY ACCOMPLISHMENTS

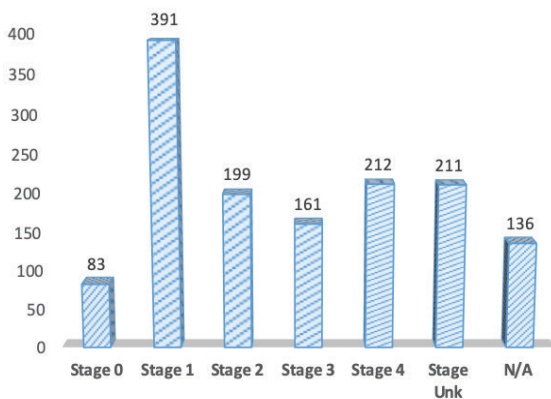
- 1,415 cases abstracted
- 710 Non-Reportable cases added
- 14,710 follow up encounters
- Prepared over 70 Tumor Boards
- Prepared eight cancer committee meetings
- Conducted monthly physician chart reviews for 140 cases
- Prepared 140 pathology reports for quarterly CAP audit
- NCDB Annual Call for Data-submitted 8,614 cases all error-free
- Submitted cases monthly to the Texas Cancer Registry
- Submitted data for RQRS on monthly basis
- Assisted in quality improvement projects
- Compiled studies/data requested

Cancer Registry - Statistics

1,393 Analytic cases accessioned for BSA Health System in 2018

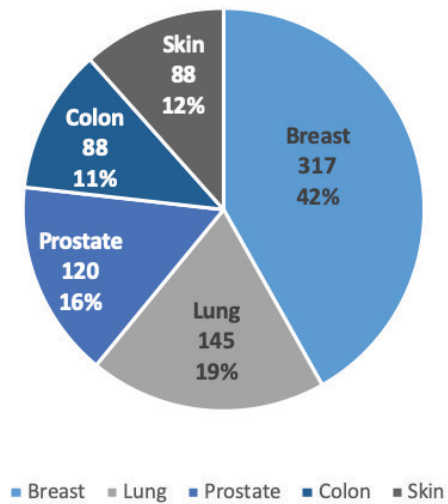
408 Non-Analytic cases accessioned; Total **1,801** cases accessioned in 2018

AJCC Stage at Diagnosis based on analytic cases

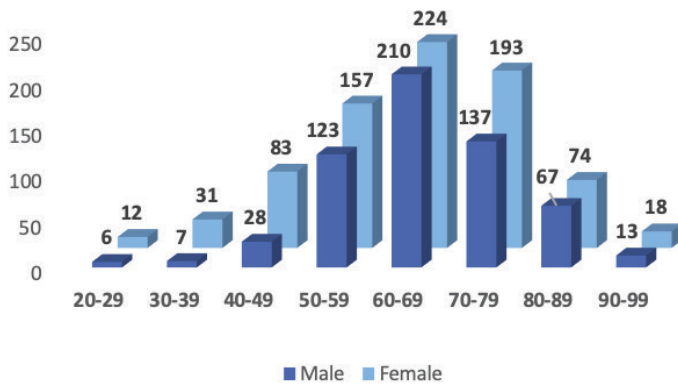


34% of patients were diagnosed and treated with early stage cancer (stage 0 or stage 1) in 2018

Top 5 sites for 2018 based on analytic case



Age at Diagnosis: Male vs Female based on analytic case



Top 10 Counties by Diagnosis based on analytic case

| | | |
|------------|-----|--------|
| Randall | 441 | 31.65% |
| Potter | 355 | 25.48% |
| Hutchinson | 93 | 6.68% |
| Gray | 54 | 3.88% |
| Deaf Smith | 49 | 3.52% |
| Moore | 42 | 3.02% |
| Ochiltree | 24 | 1.72% |
| Hansford | 18 | 1.29% |
| Dallam | 17 | 1.22% |
| Swisher | 17 | 1.22% |

79.68% of cancers in 2018 were diagnosed in the top 10 counties

Body Systems by Gender

MALES (596)

Oral Cavity - 26 (4%)

Lip
Tongue
Oropharynx
Hypopharynx

Respiratory System - 75 (13%)

Nasal/Sinus
Larynx
Lung/Bronchus

Endocrine - 16 (3%)

Thyroid

Digestive System - 134 (22%)

Esophagus
Stomach
Colon
Rectum
Anal Canal
Liver
Pancreas

Male Genital/Urinary - 205 (35%)

Prostate
Testis
Bladder
Kidney/Renal

Skin - 49 (8%)

Melanoma

Blood & Bone Marrow - 35 (6%)

Leukemia
Multiple Myeloma

Lymphatic System - 25 (4%)

Hodgkin's Disease
Non-Hodgkin's Disease

All Other Sites - 31 (5%)

FEMALES (797)

Oral Cavity - 9 (1%)

Lip
Tongue
Oropharynx
Hypopharynx

Respiratory System - 86 (11%)

Nasal/Sinus
Larynx
Lung/Bronchus

Endocrine - 37 (5%)

Thyroid

Digestive System - 105 (13%)

Esophagus
Stomach
Colon
Rectum
Anal Canal
Liver
Pancreas

Breast - 313 (39%)

Female Genital/Urinary - 117 (15%)

Cervix Uteri
Corpus Uteri
Ovary
Bladder
Kidney/Renal

Skin - 41 (5%)

Melanoma

Blood & Bone Marrow - 35 (4%)

Leukemia
Multiple Myeloma

Lymphatic System - 20 (3%)

Hodgkin's Disease
Non-Hodgkin's Disease

All Other Sites - 34 (4%)

Rapid Quality Reporting System Measures (RQRS)

Rapid Quality Reporting System (RQRS) is a reporting tool through the National Cancer Database aimed at improving quality of care and patient outcomes. These measures are based on the six national quality forum endorsed measures for breast and colon cancer. BSA has been utilizing the RQRS reporting tool since 2013. The cancer registry submits data to the RQRS database on a monthly basis and follows up on each case in order to obtain pertinent treatment information in a timely manner.

BREAST MEASURES

BCSRT: Radiation therapy is administered within one year (365 days) of diagnosis for women under the age of 70 receiving breast conserving surgery for breast cancer.

94.6%
140/148

MAC: Combination chemotherapy is considered or administered within four months (120 days) of diagnosis of women under the age of 70 with AJCC T1cN0M0 or Stage IB-III hormone receptor negative breast cancer.

100%
11/11

HT: Tamoxifen or third generation aromatase inhibitor is considered or administered within one year (365 days) of diagnosis for women with AJCC T1cN0M0 or Stage 1B-III hormone receptor positive breast cancer.

98.9%
174/176

MASTRT: Radiation therapy is recommended or administered following any mastectomy within one year (365 days) of diagnosis of breast cancer for women with > 4 positive regional lymph nodes.

90%
9/10

COLON MEASURES

12RLN: At least 12 regional lymph nodes are removed and pathologically examined for resected colon cancer.

95.9%
23/24

ACT: Adjuvant chemotherapy is considered or administered within four months (120 days) of diagnosis for patients under the age of 80 with AJCC Stage III (lymph node positive) colon cancer.

100%
8/8

Reference:

1. The American College of Surgeons (2019). Rapid Quality Reporting System. Retrieved 11 November 2019 at <https://www.facs.org/quality-programs/cancer/ncdb/qualitytools/rqrs>

BSA Harrington Cancer Center Nurse Navigators



(L to R)
Vietta Newton, RN, OCN
Isela Venzor, RN
Sharri Miller, RN, OCN

Nurse Navigator: A simple name with a very complex job description. If you have ever been diagnosed with cancer, you can understand the importance of this roll that encompasses care coordinator, patient advocate, case manager and more. Nurse navigators act as the single, primary point of contact for patients through all aspects of their treatments. They assist with setting up appointments, answering questions and educating patients about their cancer and the treatments associated with it. The clinical aspect is important but Nurse Navigators also help the patient by providing compassionate support. Every patient knows that their navigator is only a phone call away and can contact them at any time. They connect with patients by identifying the barriers to care and connect them to the many resources available including the communication with the medical team, social, logistical, financial and spiritual needs through the survivorship stages. Cancer is a difficult diagnosis and our goal is to make the patient's journey as smooth as possible and ensure that no one ever walks it alone. The Nurse Navigator is sensitive to the emotional needs of the patient, caregivers and families. At this time, we have three navigators who navigate breast, lung and head/neck cancers. From January to August 2019, we have helped navigate 182 breast cancer patients, 64 lung cancer patients and 54 head/neck patients.

Cancer Risk Assessment and Genetic Counseling

The Cancer Risk Assessment and Genetic Counseling services provided at BSA Harrington Cancer Center give our patients the opportunity to determine whether or not a genetic predisposition exists and may result in a greater chance of developing cancer.

Our nurse practitioner, Marilyn Miller, MSN-APRN, FNP-C, received special training in cancer risk assessment and genomics. She achieved a certification on Cancer Genomic Risk Assessment from the City of Hope (COH) in March 2019. As of May 15, she started seeing patients for post-test counseling and results. By the end of August, 63 patients had been seen in the Genetics Clinic.

Currently, the Genetics Clinic is only performing genetic testing and counseling for breast cancer and high risk breast cancer patients. We anticipate expansion of the program in the future.



*Elaine Bryant, RN, BSN, OCN
Marilyn Miller, MSN-APRN, FNP-C*





HARRINGTON CANCER and HEALTH FOUNDATION



Harrington Cancer and Health Foundation

Founded in 2013, the Harrington Cancer and Health Foundation is a community health foundation focusing on the areas of oncology and community health.

MISSION:

To reduce the burden of cancer and to promote and serve the healthcare needs of residents living in Amarillo and surrounding communities.

Services Provided:

- Free PSA Screenings- 320 screened, 21 identified to have PSA > 4
- Sunscreen Dispensers with free sunscreen to decrease skin cancer rates
 - Amarillo City Pools
 - Palo Duro Canyon State Park
- Hotel discounts for cancer patients
- Chemo Cars – Free, on-demand transportation program to and from non-surgical oncology appointments
- Patient Assistance
- Community Cancer Survivor's Day Celebration
- \$150,000 in mammography assistance
- Tobacco cessation classes with free quit aids
- Prostate cancer Nurse Navigator
- Social Worker
- 24 Hours in the Canyon Cancer Survivorship Center

24 Hours in the Canyon Survivorship Center

Established in June 2015, the Survivorship Center is a community center available for residents of the Texas Panhandle. The programs and services offered are free for any cancer survivor and their caregiver(s) regardless of where they received their treatment.

MISSION: To provide the necessary resources to meet and address the unique needs of cancer survivors.

Services Offered:

- Treatment Summary & Survivorship Care Plan by Oncology Certified Nurse
- Licensed Professional Counseling Services
- Expressive Art Classes
- Tai Chi
- Water Exercise
- Zumba
- Balance Class
- Yoga
- Walking Group
- Stationary Bike Class
- Educational Classes
- Meditation, Mindfulness, & Body Classes
- Nutrition Classes
- Wig Room
- Personal Training with Cancer Exercise Specialist
- Resource Library
- Oncology Certified Massage Therapist
- Infusion Room Massage
- Support Group
- Hiking Trips
- Fly Fishing Outings



HARRINGTON
CANCER and HEALTH
FOUNDATION

SURVIVORSHIP





American Cancer Society (ACS)

The American Cancer Society's mission is to save lives, celebrate lives and lead the fight for a world without cancer. Every day, all day, they are there when people are in need. By phone, email, online chat, in English or in Spanish, however support is needed, they are committed to provide it.

Services & Programs Offered:

- **Road to Recovery** - free rides for patients to and from treatment.
- **Reach to Recovery** - a support network matching breast cancer survivors with recently diagnosed breast cancer patients.
- **Hotel Partnerships** - free or reduced-cost lodging during treatment.
- **Wig Program** - provides free wigs in local ACS offices and some cancer treatment facilities or patients can opt for a voucher to the Tender Loving Care (TLC) catalog for women undergoing treatment and experiencing hair loss as a result.
- **National Cancer Information Center & Cancer.org** - patient and caregiver support & resources with on-demand solutions and information about medical insurance, treatment, localized resources database and much more.
- **Cancer.org** - offers access to the most recent and accurate cancer information and news. A few pages to note are cancer.org/survivors, cancer.org/videos, cancer.org/treatmentdecisions, cancer.org/languages.
- **Personal Health Managers** - an organizational portfolio, for newly diagnosed patients, containing tailored information relevant to their type of cancer that will empower patients to make educated health decisions and connect them to local resources and services. Additionally, the portfolio helps patients keep track of critical medical information provided by their healthcare team. In 2019 the PHM will be available electronically or in hard copy form.
- **Educational Materials** - each year ACS provides 12+ million materials to healthcare systems and community partners.
- **Research** - extra- and intra-mural research includes cancer prevention studies, highly cited reports on cancer occurrence, causes, prevention, early detection, treatment, and survival; studies behavioral, psychosocial, and environmental factors related to cancer; analyze the global economic and policy landscape impacting cancer; and supports numerous important discoveries and some of the brightest researchers, including 47 Noble Prize winners to date.

Community Events

- **Relay for Life** - Uniting communities across the globe, the American Cancer Society celebrates people who have battled cancer, remember loved ones lost, and take action for lifesaving change. Funds raised help provide free information and support for people facing the disease today, educate people about how to reduce their risk for cancer or detect it early when it's easiest to treat, and fund cancer research that will help protect future generations.
- **Cattle Barons Ball** - A one-of-a-kind evening, featuring great food, dancing, a spectacular auction, and much more. With your support, the American Cancer Society saves lives by helping people stay well and get well, by finding cures and by fighting back against cancer.

Patients Served

- As of the end of September 2018, 4,645 American Cancer Society services have been provided to cancer patients that reside in the High Plains of Texas and 44,347 services to cancer patients across the state of Texas.
- BSA Harrington Cancer Center has partnered with the American Cancer Society to provide 102 patients with 206 services as of September 30, 2018.

Fun in the Community

BSA Harrington Cancer Center and BSA Harrington Breast Center take pride in supporting our community and patients. From prevention education to fundraising events, BSA Harrington Cancer Center and Breast Center team members can be seen out and about supporting local and national efforts. This year we had the privilege of participating in many community events that highlight the importance of early detection, prevention and the need for research and support funds. Whether it is cycling for 24 hours, running 5ks, wearing pink hair, red noses or dressing up like cowboys we are always willing to go the extra mile. Here are the 2019 events we had the pleasure of partnering with our patients and community for:

- 24 Hours in the Canyon
- Amarillo Chamber of Commerce Business Connection
- BSA Spring and Fall Care Fairs
- American Heart Association Go Red for Women
- Hansford County Hospital District Health Fair
- Medical Center League House "Dinner in the Garden"
- Our Colors Run Together 5k
- Pantex Health Fair
- American Cancer Society Relay For Life
- Senior Fall Festival
- Susan G. Komen "Big Wigs"
- Susan G. Komen "More Than Pink" Walk
- Swisher County Health Fair
- TX DOT Health Fair
- VA Employee Cancer Information Fair
- Walgreens Red Nose Day
- West Texas A&M University Nursing Student Health Fair





BSA

2019 ANNUAL CANCER REPORT

BSA Health System
1600 Wallace Blvd.
Amarillo, Texas 79106
(806) 212-2000