



# Dictation Algorithms



# Dictation Algorithms

The following algorithms have been created to highlight the nomenclature necessary to avoid queries.

## Diagnoses:

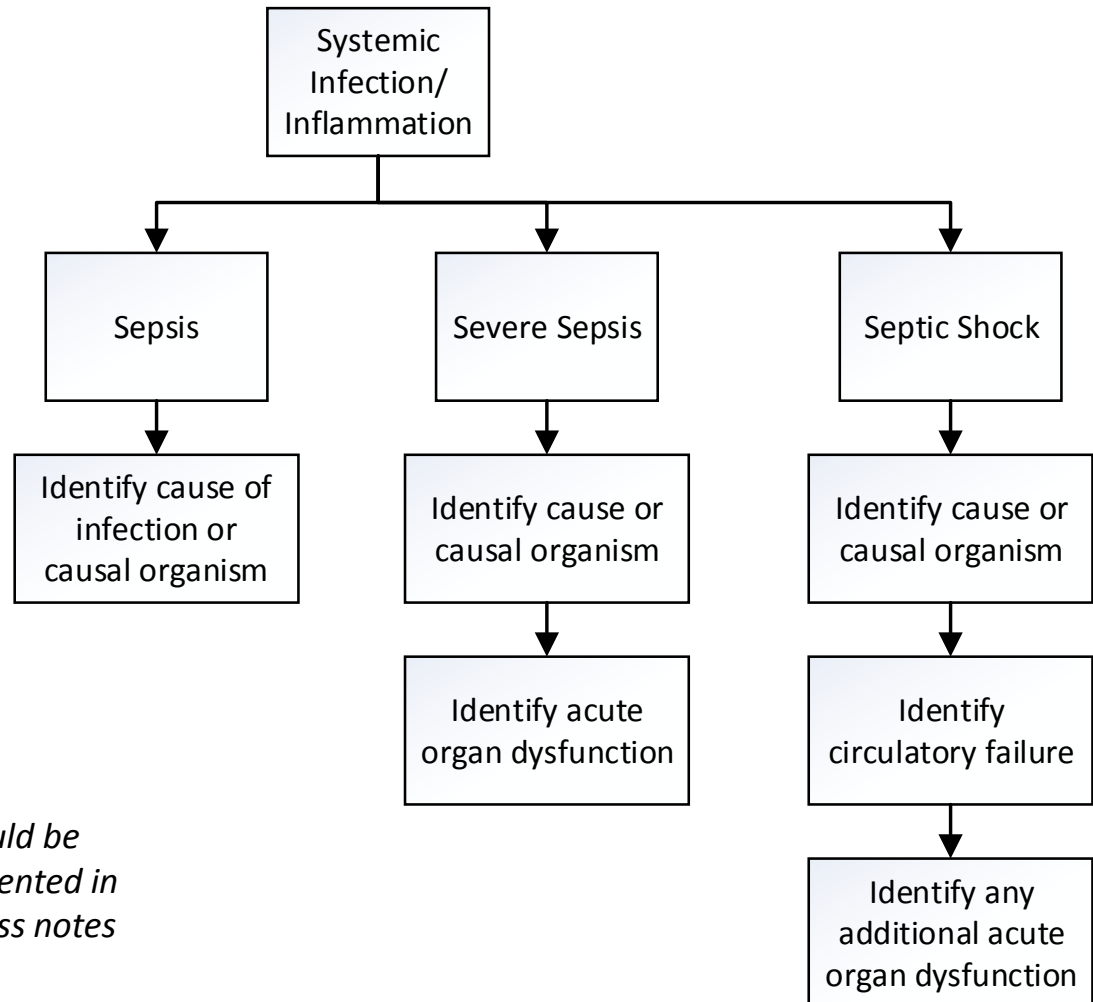
Anemia	Diabetes	Pregnancy
Appendicitis	Fractures	Pregnancy Hypertension
Asthma	Heart Failure	Pressure Ulcers
Blood Transfusion	Myocardial Infarction	Respiratory Failure
Cerebral Vascular Accident	Neoplasms	Systemic Infection
Chronic Kidney Disease	Otitis Media	Spinal Fusion
COPD	Pneumonia	



# Systemic Infection Dictation Algorithm

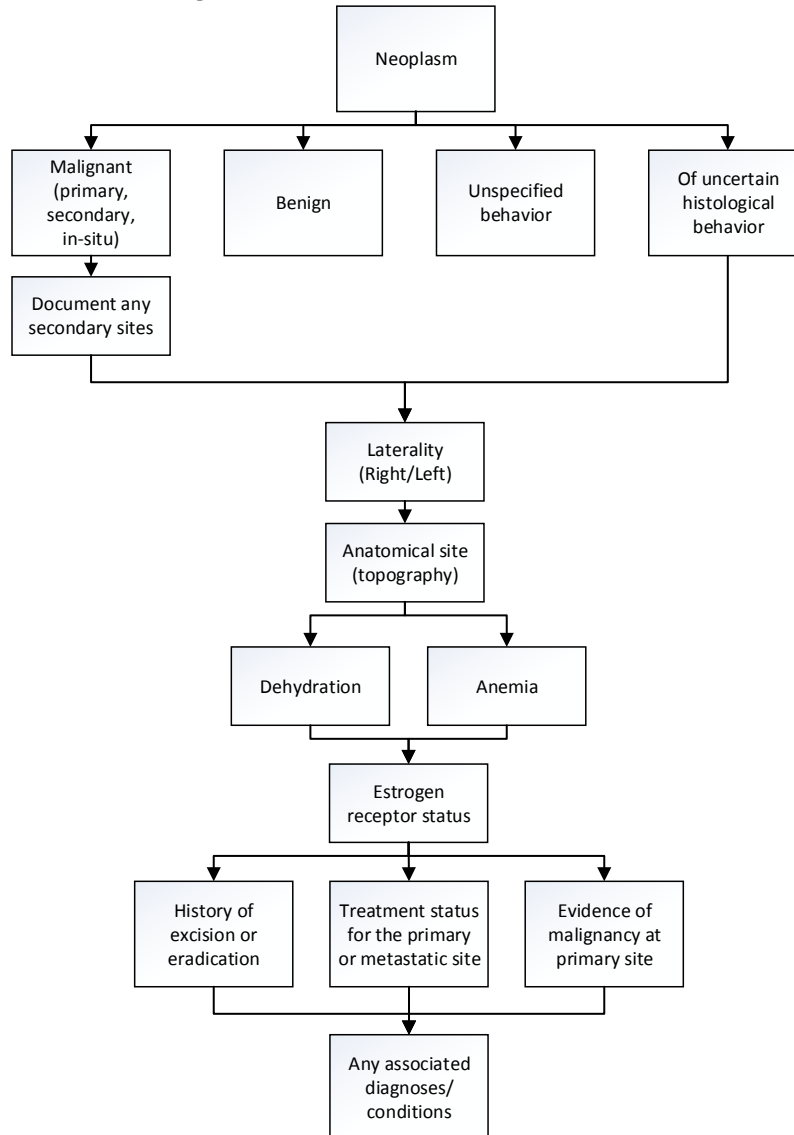
## ICD-10 Hint:

- C** Document **causal** agents as clearly as possible
- A** Document the condition as **acute** or chronic
- L** Document **location** with as much specificity as possible
- C** Document the **clinical findings/** indicators to support the diagnosis documented
- S** Document related, **secondary** or causal illness whenever appropriate





# Neoplasms Dictation Algorithm



## ICD-10 Hint:

- C** Document **causal** agents as clearly as possible
- A** Document the condition as **acute** or chronic
- L** Document **location** with as much specificity as possible
- C** Document the **clinical findings/** indicators to support the diagnosis documented
- S** Document related, **secondary** or causal illness whenever appropriate

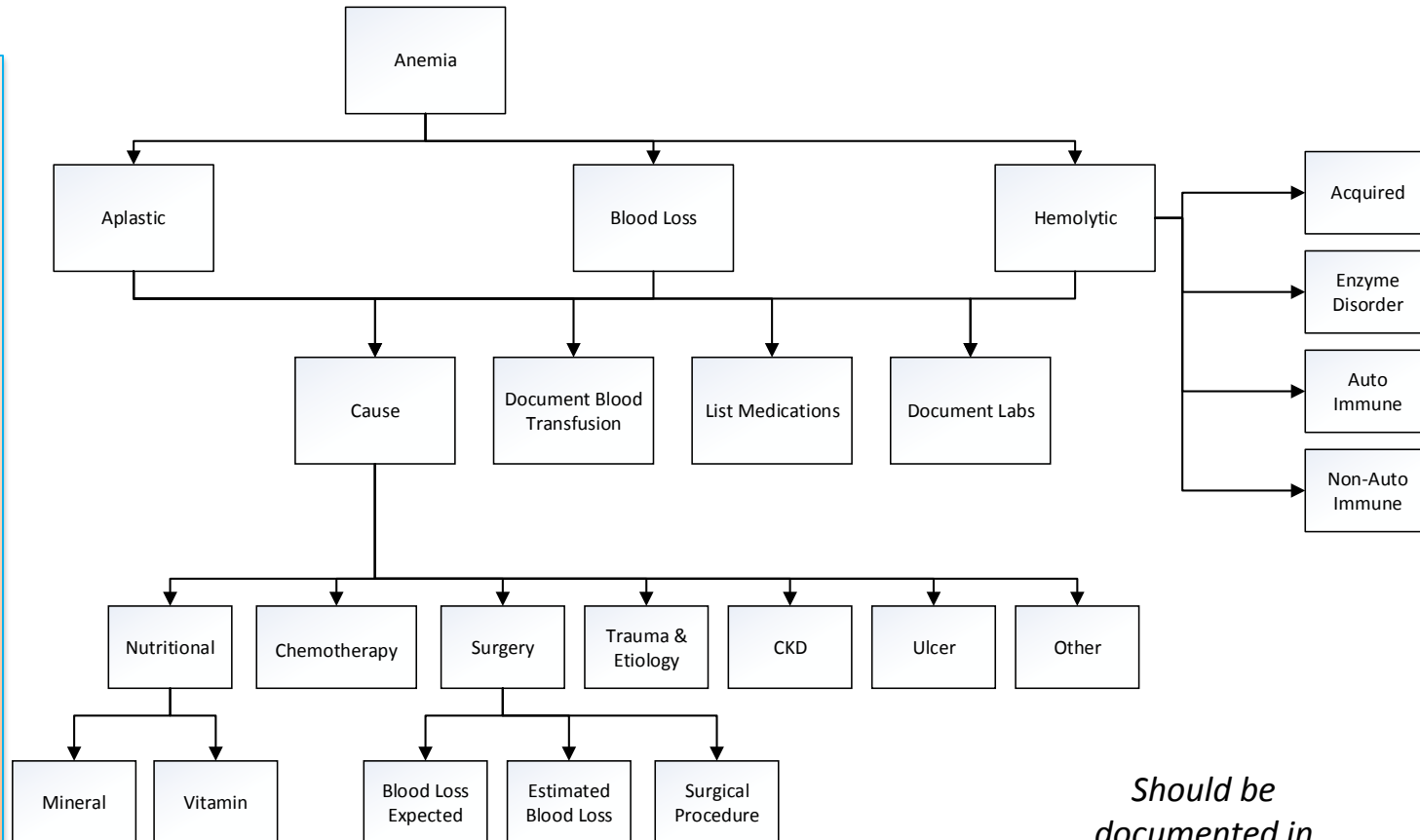
*Should be documented in progress notes*



# Anemia Dictation Algorithm

## ICD-10 Hint:

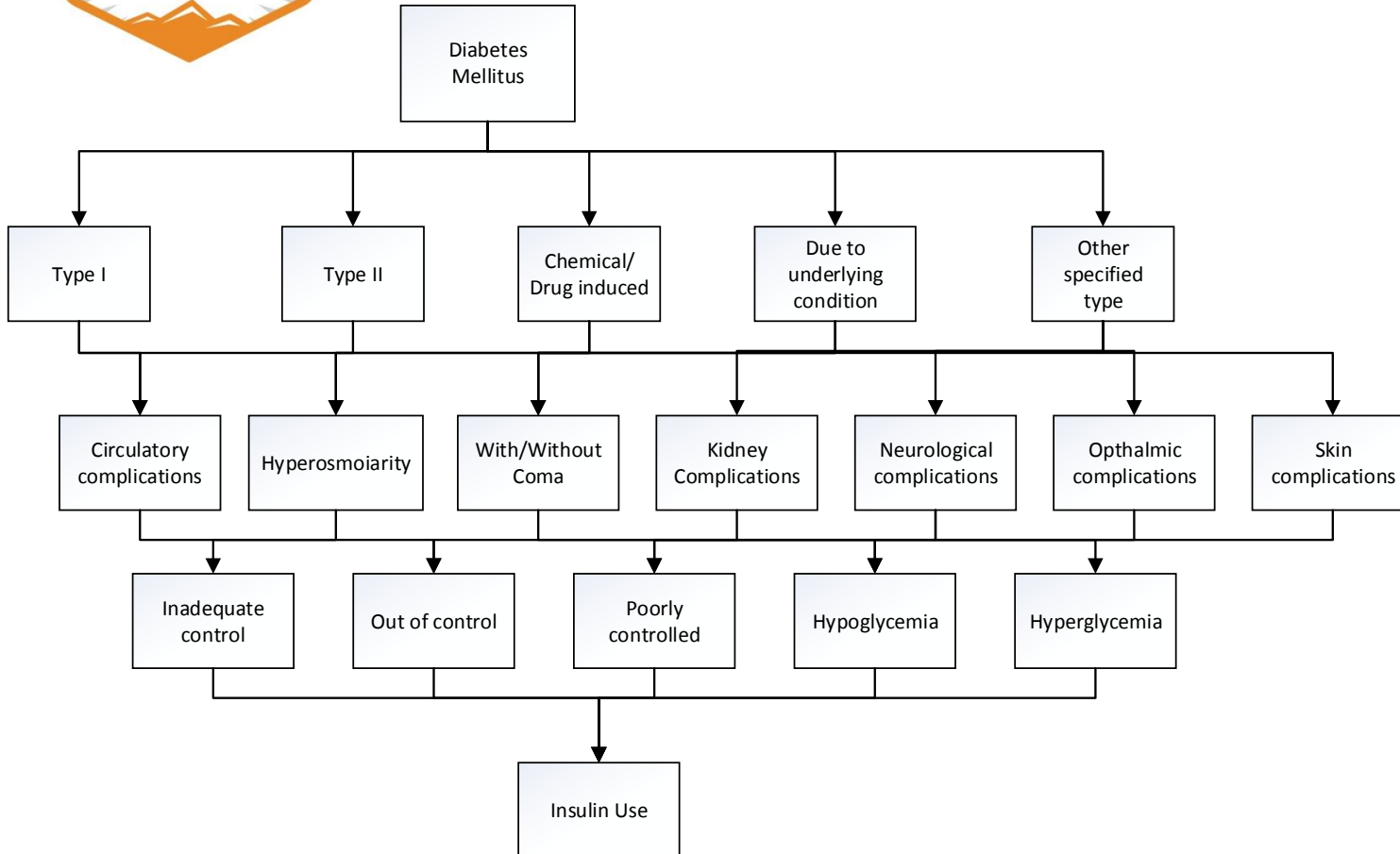
- C** Document **causal** agents as clearly as possible
- A** Document the condition as **acute** or chronic
- L** Document **location** with as much specificity as possible
- C** Document the **clinical findings/** indicators to support the diagnosis documented
- S** Document related, **secondary** or causal illness whenever appropriate



*Should be documented in progress notes*



# Diabetes Dictation Algorithm



## ICD-10 Hint:

- C** Document **causal** agents as clearly as possible
- A** Document the condition as **acute** or **chronic**
- L** Document **location** with as much specificity as possible
- C** Document the **clinical findings/** indicators to support the diagnosis documented
- S** Document related, **secondary** or **causal** illness whenever appropriate

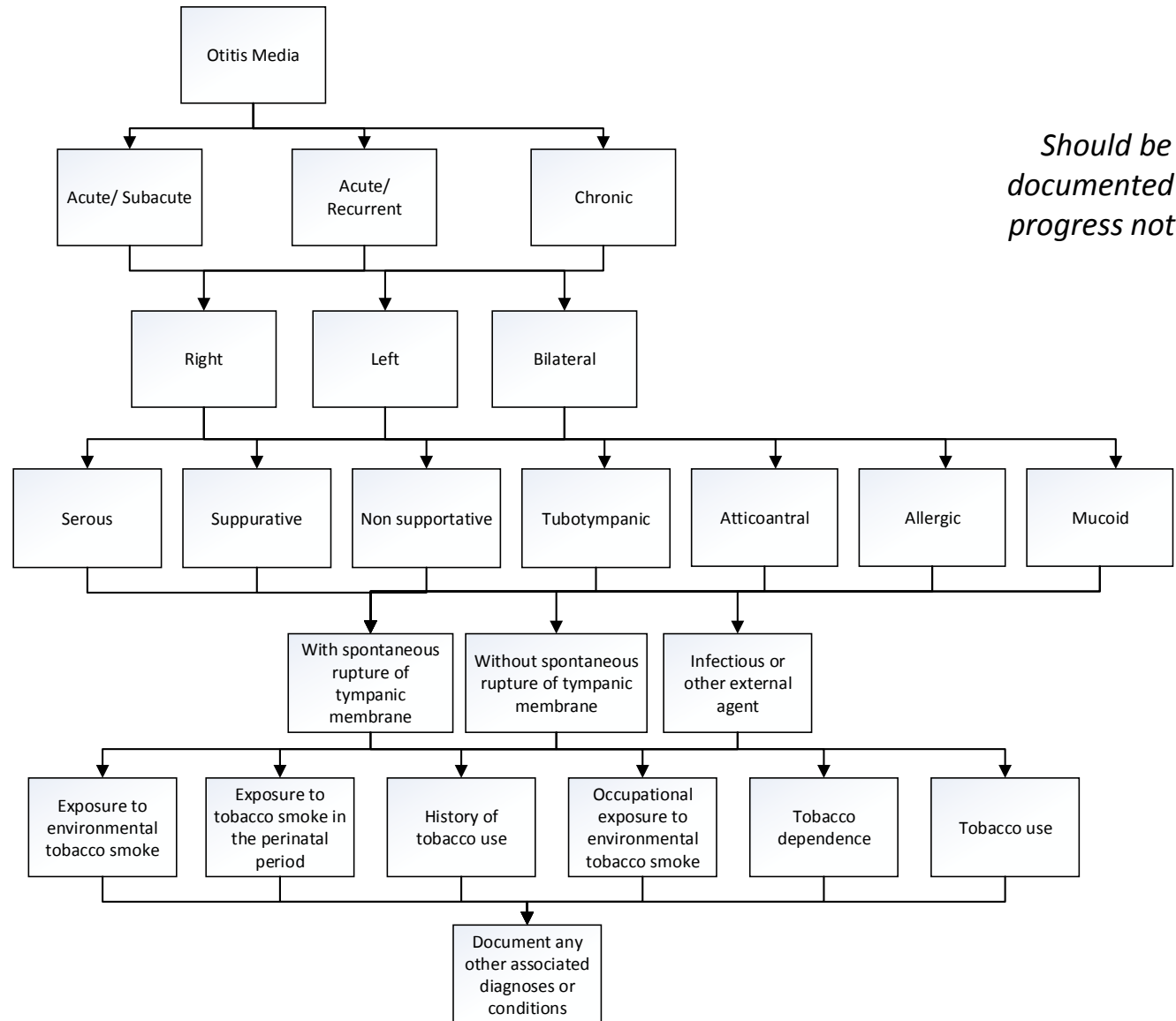
*Should be documented in progress notes*



# Otitis Media Dictation Algorithm

## ICD-10 Hint:

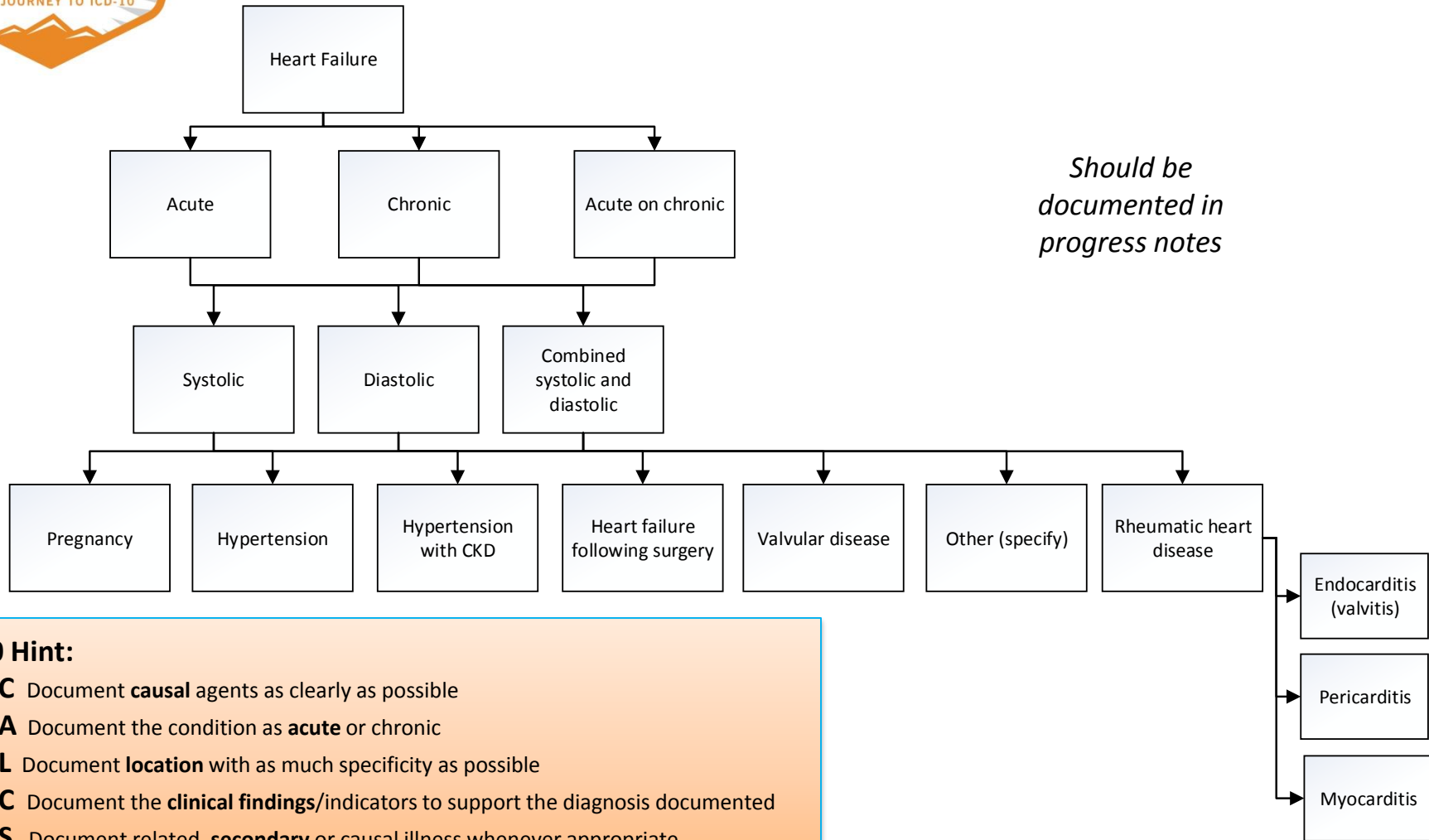
- C** Document **causal** agents as clearly as possible
- A** Document the condition as **acute** or **chronic**
- L** Document **location** with as much specificity as possible
- C** Document the **clinical findings/** indicators to support the diagnosis documented
- S** Document related, **secondary** or causal illness whenever appropriate



*Should be documented in progress notes*



# Heart Failure Dictation Algorithm



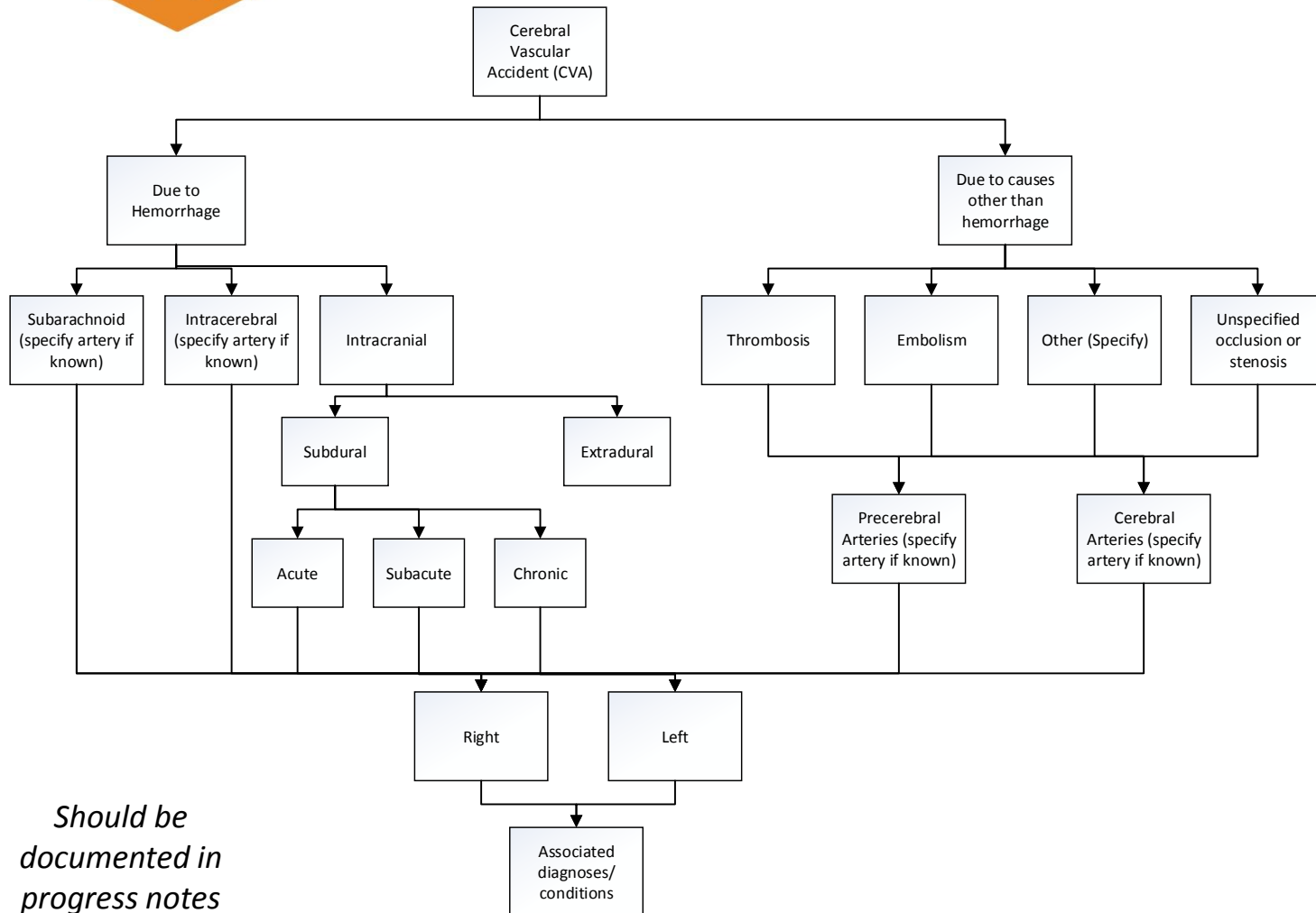
## ICD-10 Hint:

- C** Document **causal** agents as clearly as possible
- A** Document the condition as **acute** or chronic
- L** Document **location** with as much specificity as possible
- C** Document the **clinical findings**/indicators to support the diagnosis documented
- S** Document related, **secondary** or causal illness whenever appropriate





# Cerebral Vascular Accident (CVA) Dictation Algorithm



## ICD-10 Hint:

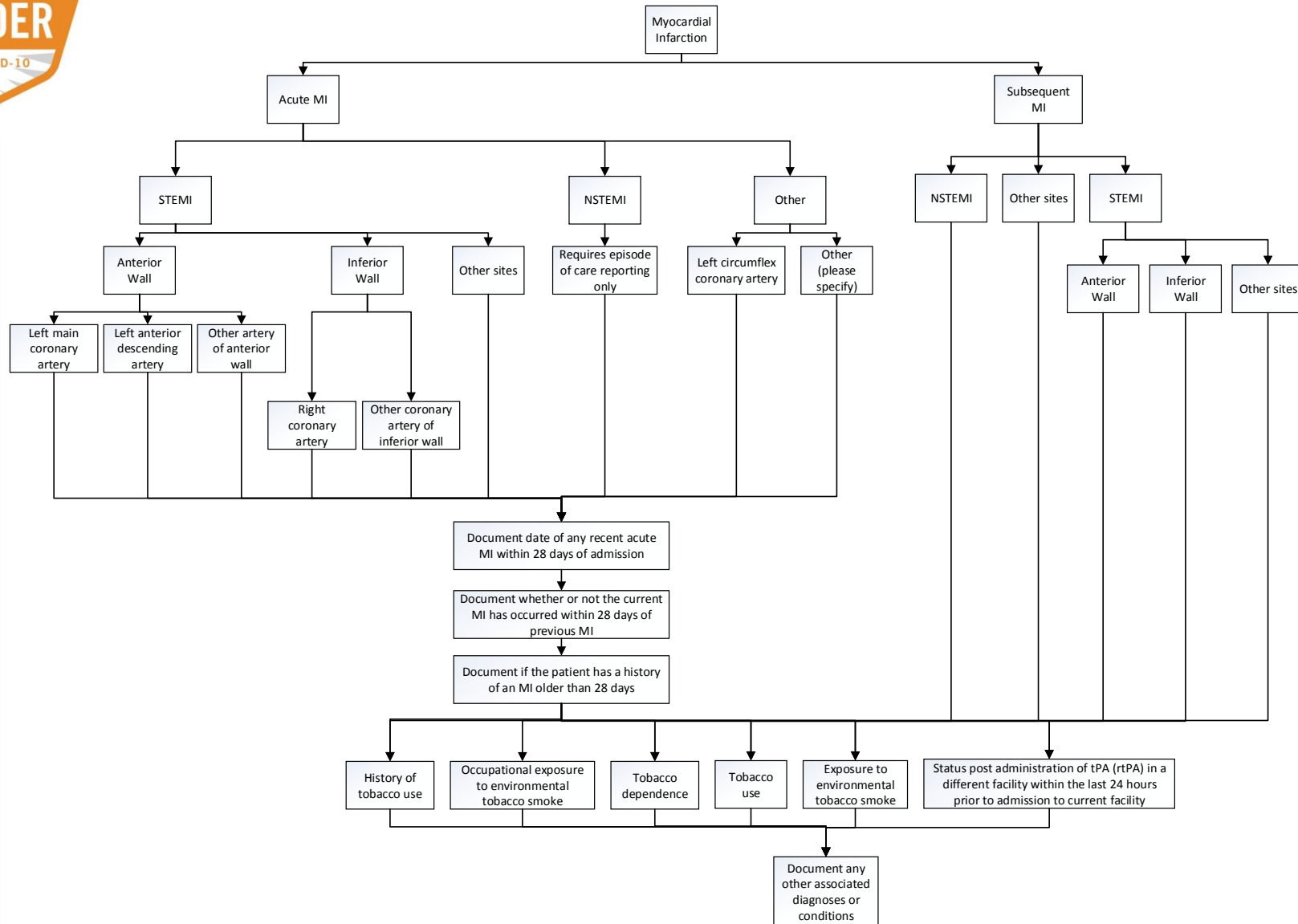
- C** Document **causal** agents as clearly as possible
- A** Document the condition as **acute** or **chronic**
- L** Document **location** with as much specificity as possible
- C** Document the **clinical findings/** indicators to support the diagnosis documented
- S** Document related, **secondary** or causal illness whenever appropriate



# Myocardial Infarction Dictation Algorithm

## ICD-10 Hint:

- C** Document **causal agents** as clearly as possible
- A** Document the condition as **acute** or chronic
- L** Document **location** with as much specificity as possible
- C** Document the **clinical findings/ indicators** to support the diagnosis documented
- S** Document related, **secondary** or causal illness whenever appropriate

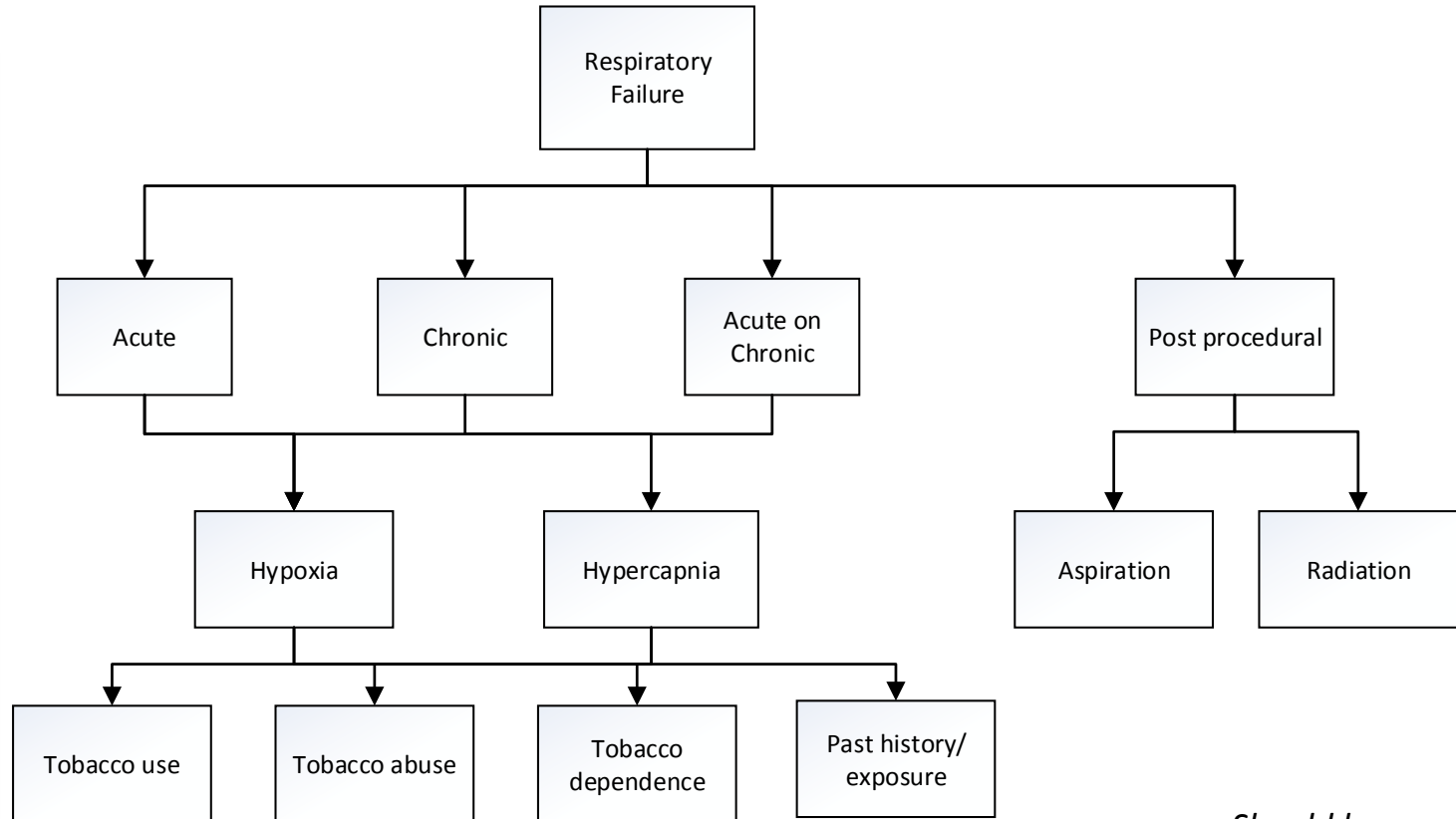




# Respiratory Failure Dictation Algorithm

## ICD-10 Hint:

- C** Document **causal** agents as clearly as possible
- A** Document the condition as **acute** or chronic
- L** Document **location** with as much specificity as possible
- C** Document the **clinical findings/** indicators to support the diagnosis documented
- S** Document related, **secondary** or causal illness whenever appropriate



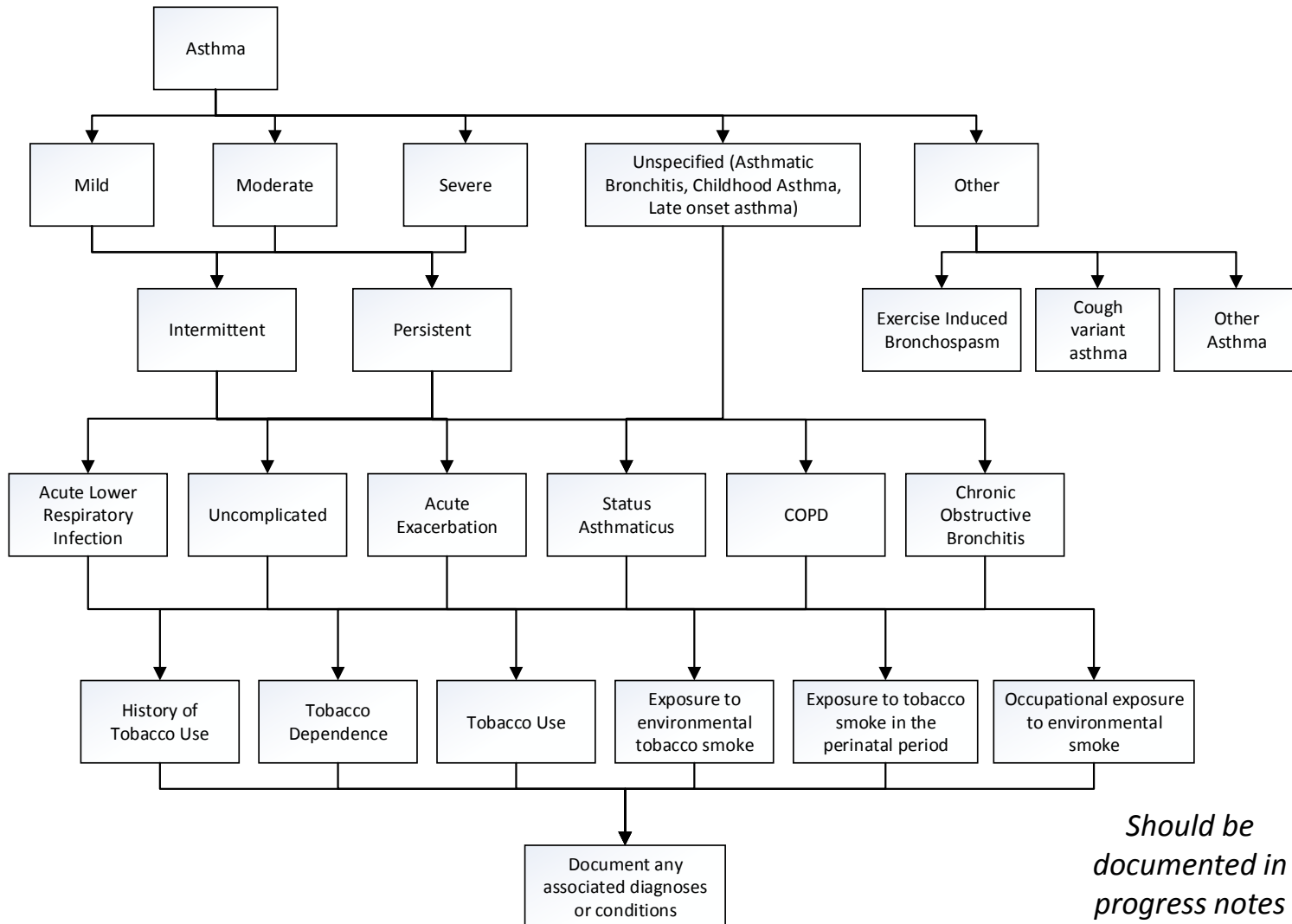
*Should be documented in progress notes*



# Asthma Dictation Algorithm

## ICD-10 Hint:

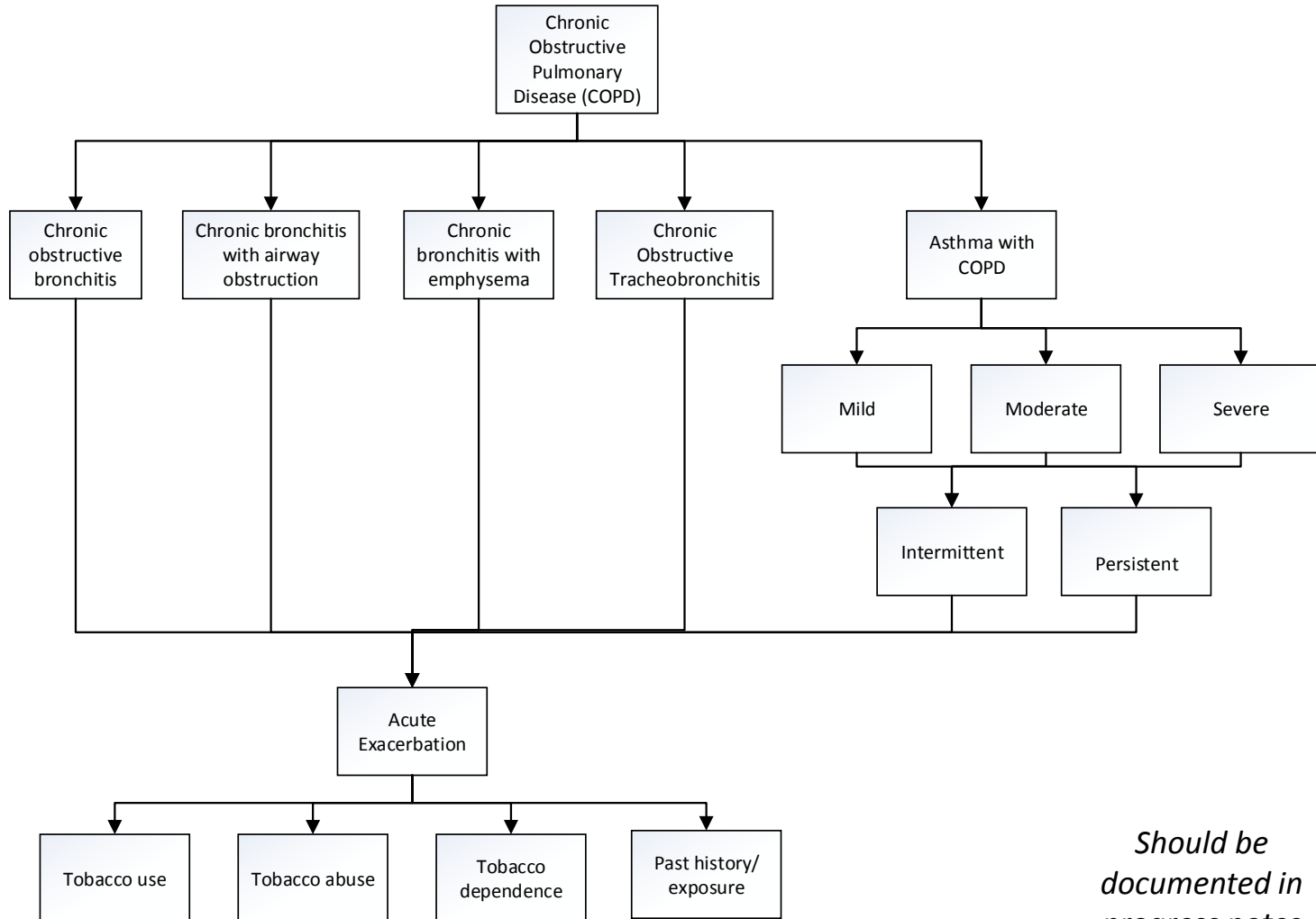
- C** Document **causal** agents as clearly as possible
- A** Document the condition as **acute** or chronic
- L** Document **location** with as much specificity as possible
- C** Document the **clinical findings/** indicators to support the diagnosis documented
- S** Document related, **secondary** or causal illness whenever appropriate



*Should be documented in progress notes*



# COPD Dictation Algorithm



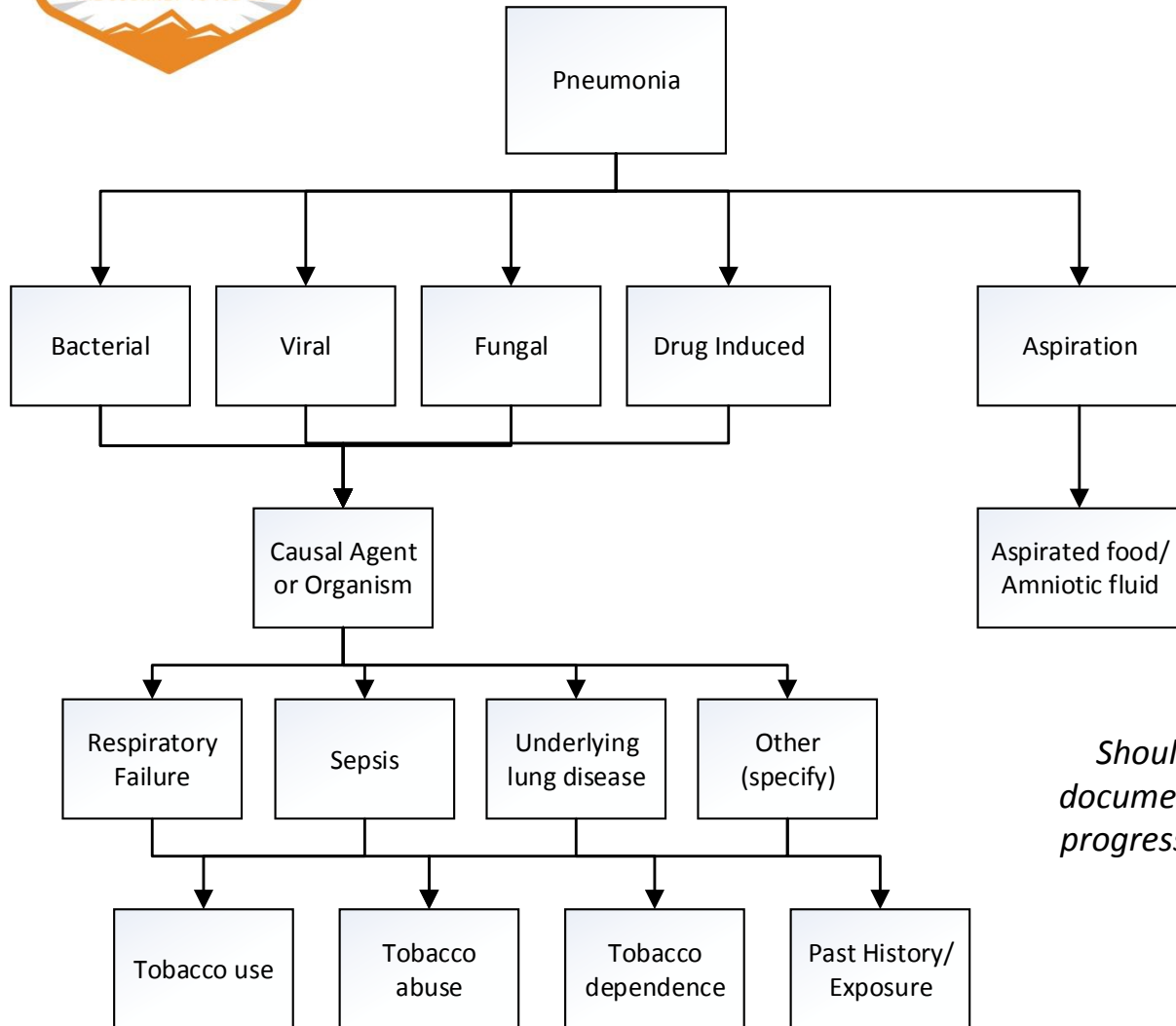
## ICD-10 Hint:

- C** Document **causal** agents as clearly as possible
- A** Document the condition as **acute** or chronic
- L** Document **location** with as much specificity as possible
- C** Document the **clinical findings/** indicators to support the diagnosis documented
- S** Document related, **secondary** or causal illness whenever appropriate

*Should be documented in progress notes*



# Pneumonia Dictation Algorithm



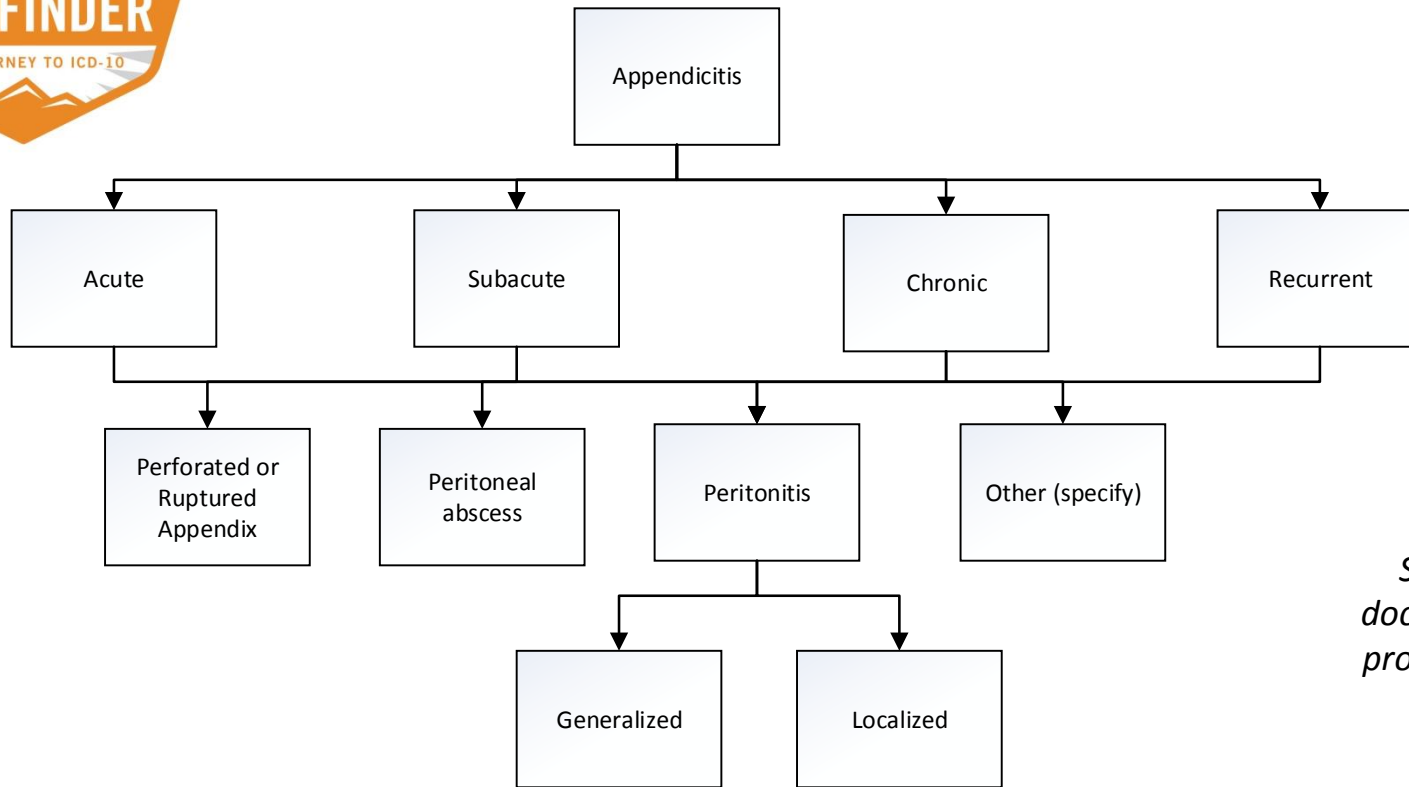
*Should be documented in progress notes*

## ICD-10 Hint:

- C** Document **causal** agents as clearly as possible
- A** Document the condition as **acute** or chronic
- L** Document **location** with as much specificity as possible
- C** Document the **clinical findings/** indicators to support the diagnosis documented
- S** Document related, **secondary** or causal illness whenever appropriate



# Appendicitis Dictation Algorithm



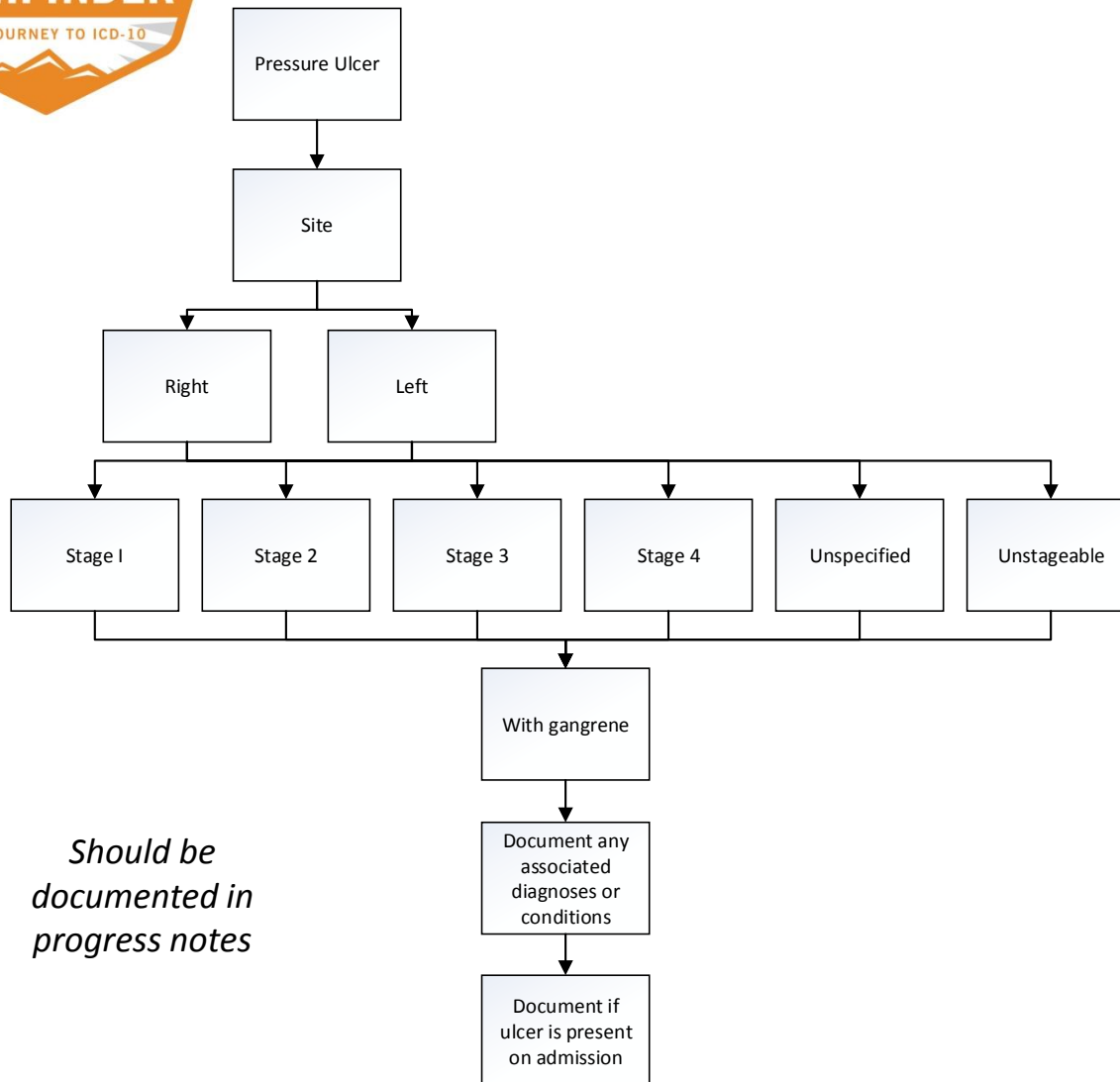
*Should be documented in progress notes*

## ICD-10 Hint:

- C** Document **causal** agents as clearly as possible
- A** Document the condition as **acute** or chronic
- L** Document **location** with as much specificity as possible
- C** Document the **clinical findings**/indicators to support the diagnosis documented
- S** Document related, **secondary** or causal illness whenever appropriate



# Pressure Ulcers Dictation Algorithm



*Should be documented in progress notes*

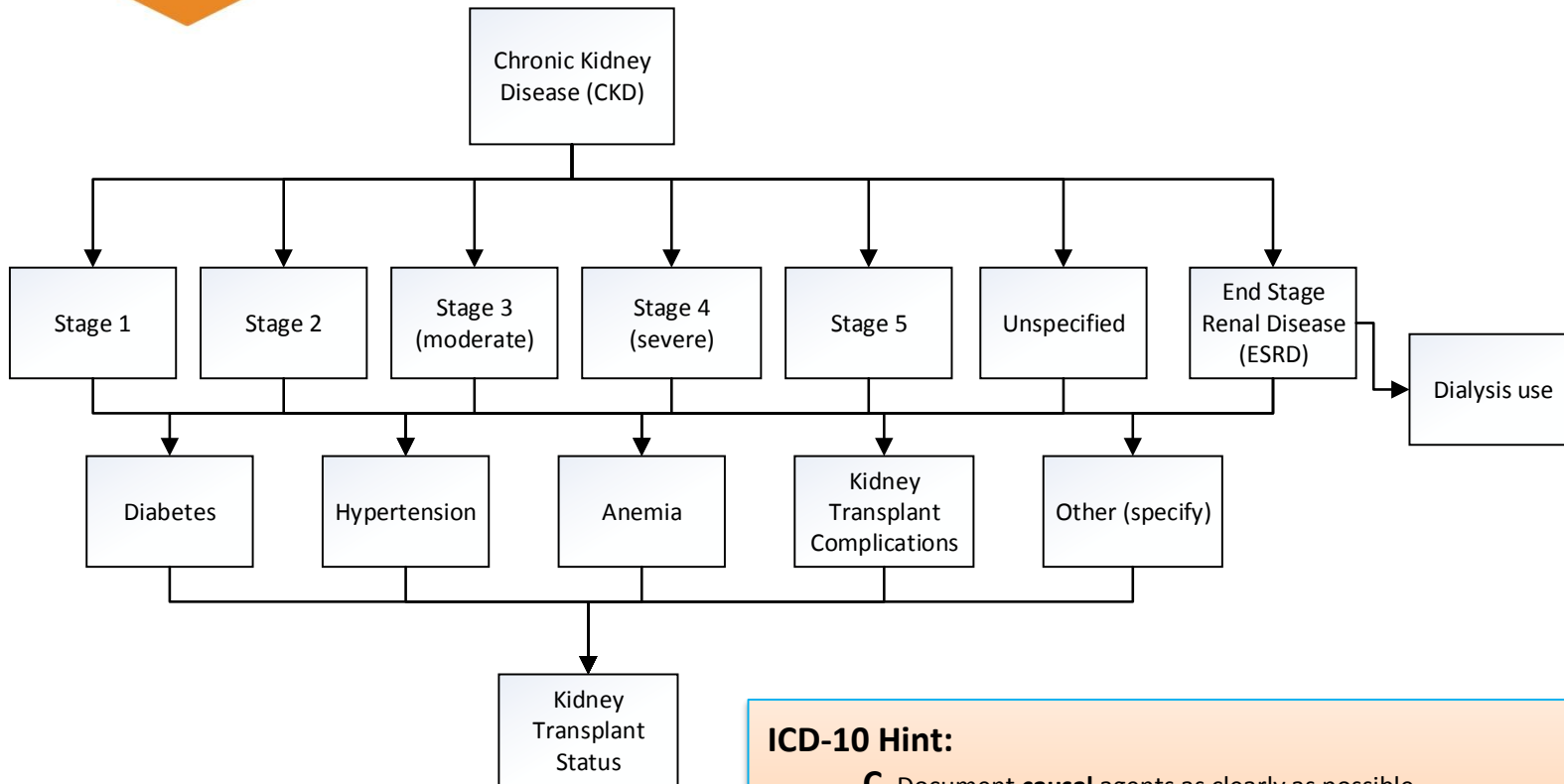
## ICD-10 Hint:

- C** Document **causal** agents as clearly as possible
- A** Document the condition as **acute** or **chronic**
- L** Document **location** with as much specificity as possible
- C** Document the **clinical findings/** indicators to support the diagnosis documented
- S** Document related, **secondary** or causal illness whenever appropriate





# Chronic Kidney Disease Dictation Algorithm



*Should be documented in progress notes*

## ICD-10 Hint:

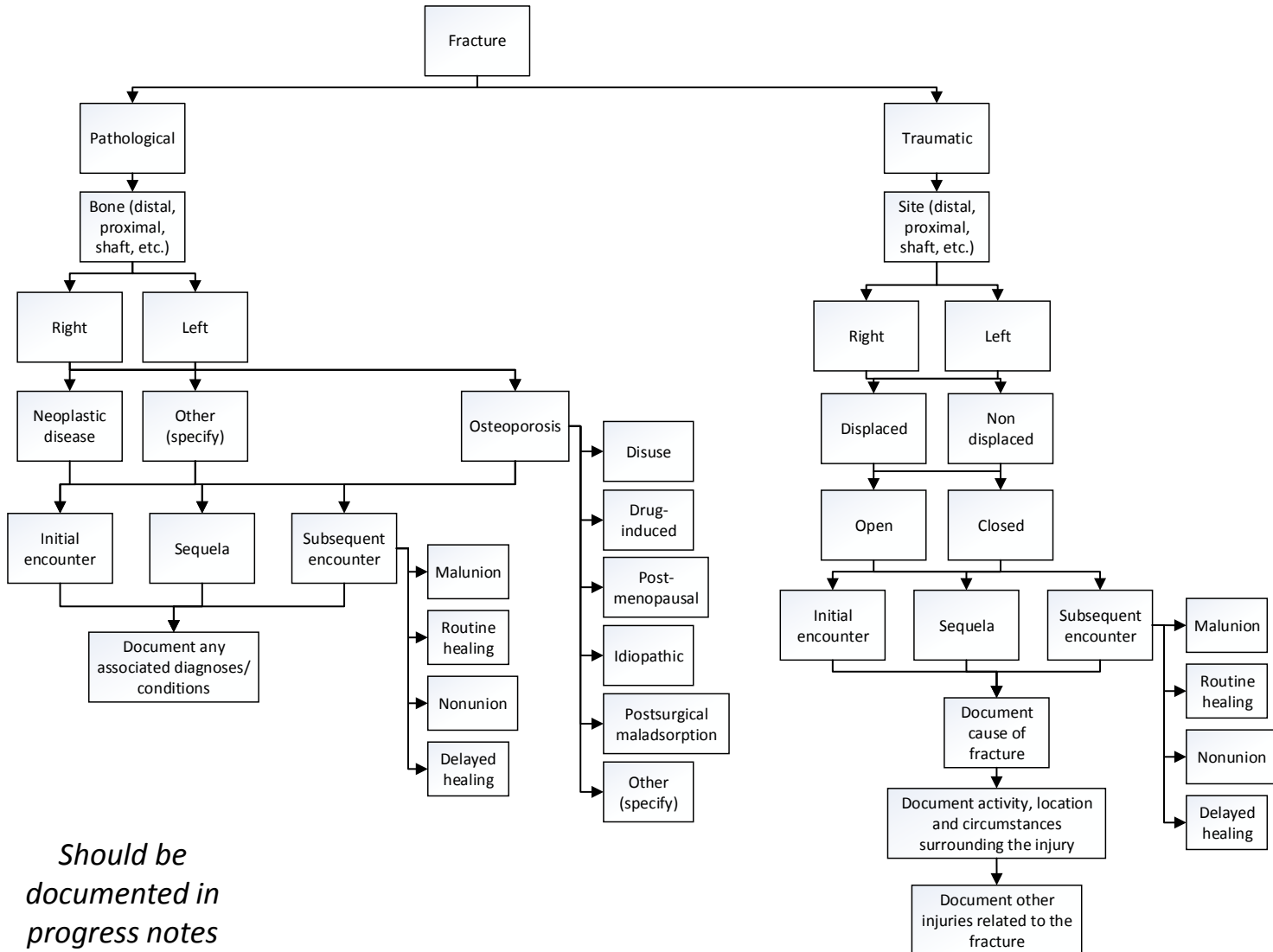
- C** Document **causal** agents as clearly as possible
- A** Document the condition as **acute** or chronic
- L** Document **location** with as much specificity as possible
- C** Document the **clinical findings**/indicators to support the diagnosis documented
- S** Document related, **secondary** or causal illness whenever appropriate



# Fractures Dictation Algorithm

## ICD-10 Hint:

- C** Document **causal** agents as clearly as possible
- A** Document the condition as **acute** or chronic
- L** Document **location** with as much specificity as possible
- C** Document the **clinical findings/** indicators to support the diagnosis documented
- S** Document related, **secondary** or causal illness whenever appropriate

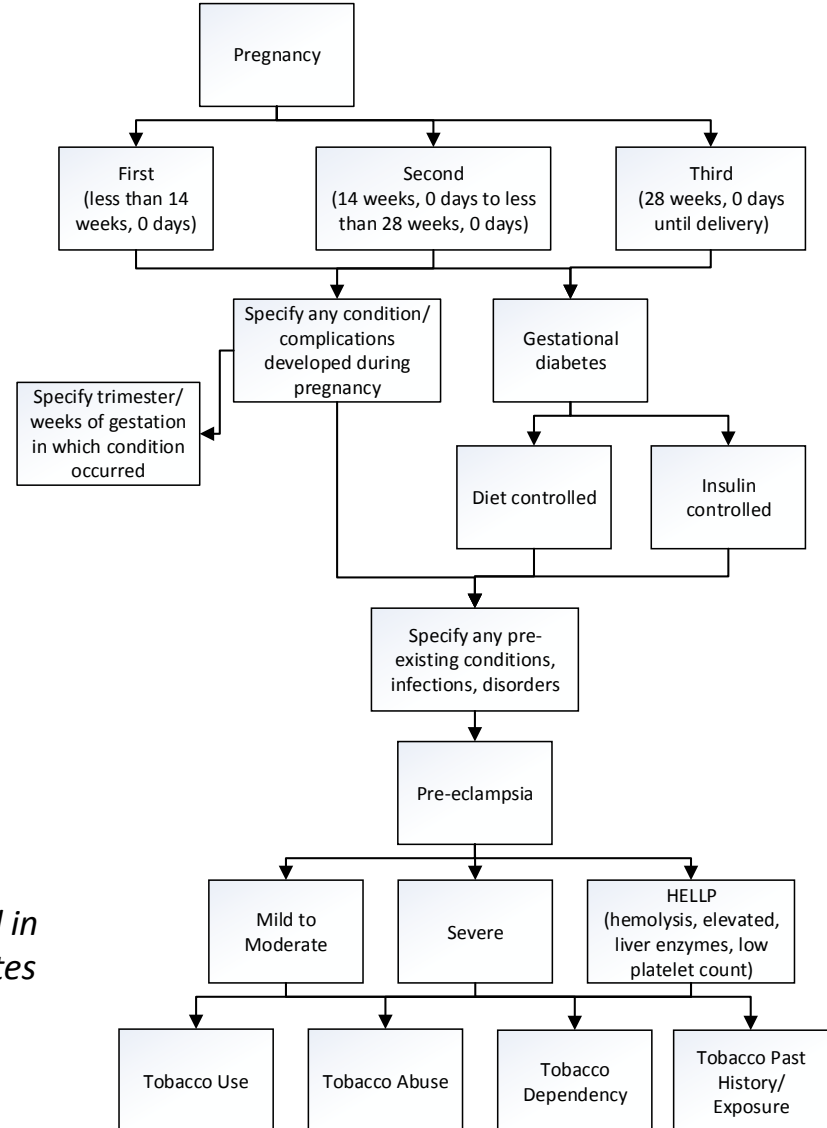




# Pregnancy Dictation Algorithm

## ICD-10 Hint:

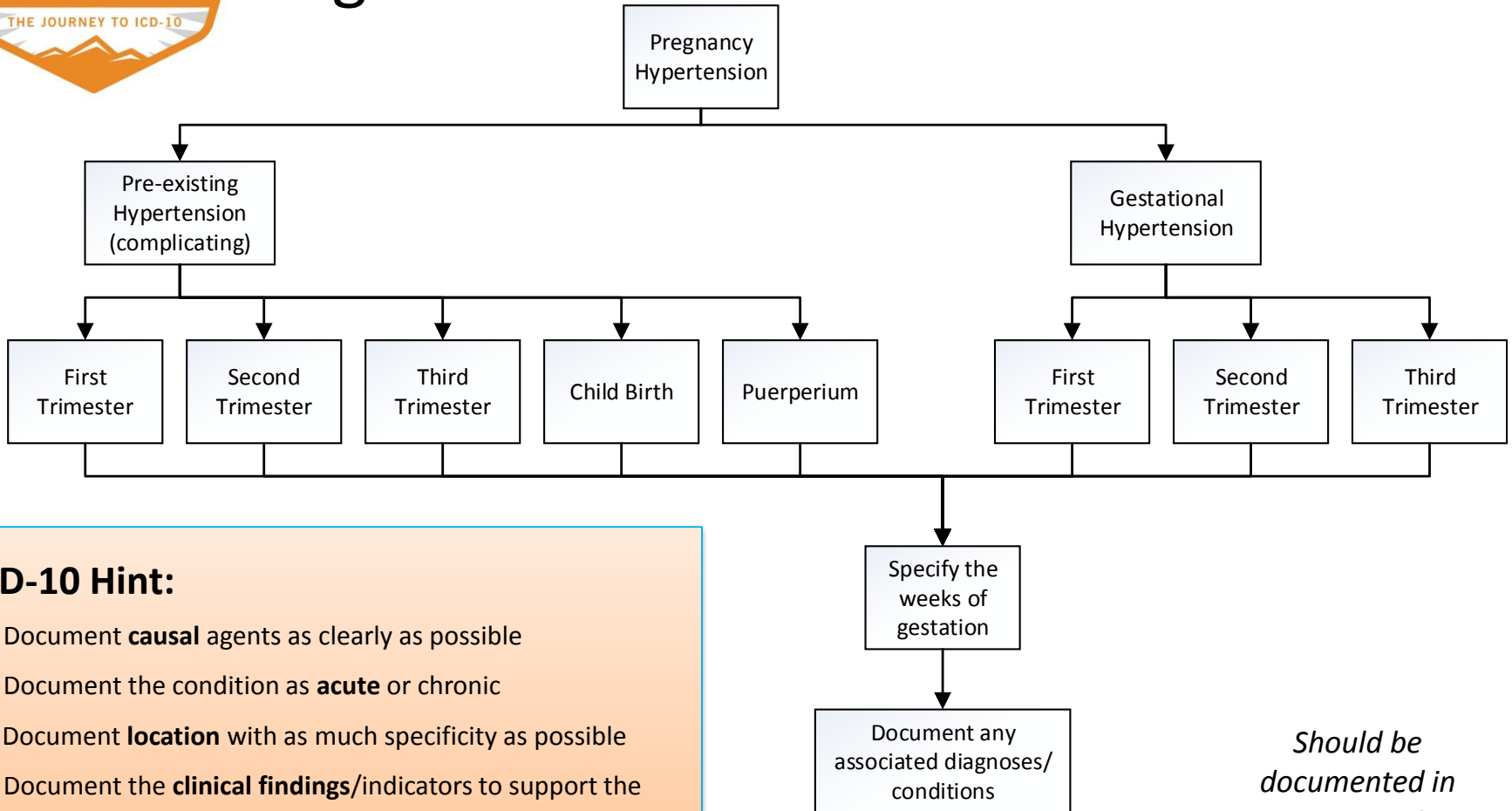
- C** Document **causal** agents as clearly as possible
- A** Document the condition as **acute** or chronic
- L** Document **location** with as much specificity as possible
- C** Document the **clinical findings/** indicators to support the diagnosis documented
- S** Document related, **secondary** or causal illness whenever appropriate



*Should be documented in progress notes*



# Pregnancy Hypertension Dictation Algorithm



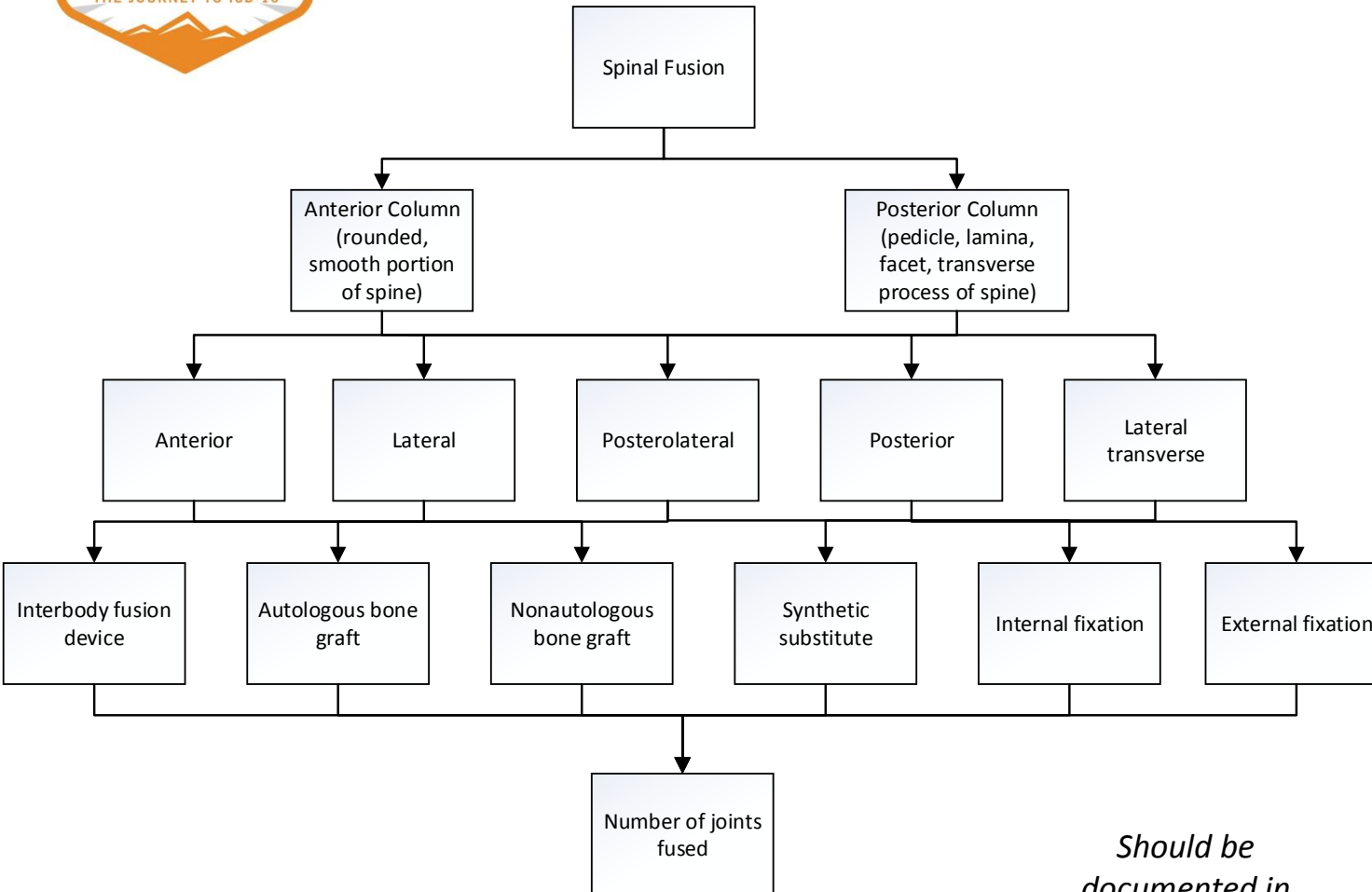
## ICD-10 Hint:

- C** Document **causal** agents as clearly as possible
- A** Document the condition as **acute** or chronic
- L** Document **location** with as much specificity as possible
- C** Document the **clinical findings**/indicators to support the diagnosis documented
- S** Document related, **secondary** or causal illness whenever appropriate

*Should be documented in progress notes*



# Spinal Fusion Dictation Algorithm



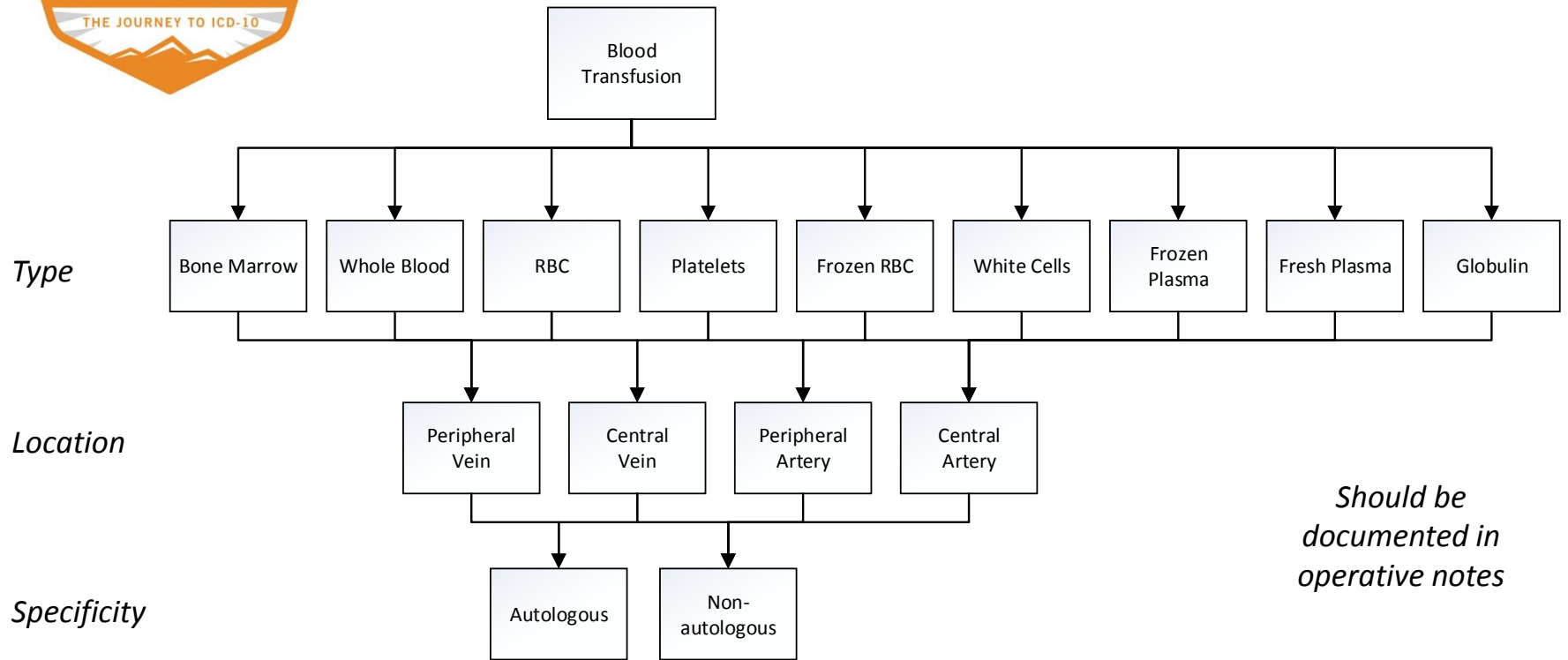
*Should be documented in operative notes*

## ICD-10 Hint:

- C** Document **causal** agents as clearly as possible
- A** Document the condition as **acute** or **chronic**
- L** Document **location** with as much specificity as possible
- C** Document the **clinical findings/** indicators to support the diagnosis documented
- S** Document related, **secondary** or causal illness whenever appropriate



# Blood Transfusion Dictation Algorithm



## ICD-10 Hint:

- C** Document **causal** agents as clearly as possible
- A** Document the condition as **acute** or chronic
- L** Document **location** with as much specificity as possible
- C** Document the **clinical findings**/indicators to support the diagnosis documented
- S** Document related, **secondary** or causal illness whenever appropriate